



Republika e Kosovës - Republika Kosova - Republic of Kosovo

Qeveria - Vlada - Government

Ministria e Mjedisit, Planifikimit Hapësitor dhe Infrastrukturës  
Ministarstvo životne sredine, prostornog planiranja i infrastrukture  
Ministry of Environment, Spatial Planning and Infrastructure

Departamenti për Patentë Shoferë dhe Automjete  
Odeljenje za vozačke dozvole i vozila  
Department for Driver's License and Vehicles

1001. Are you allowed to change lanes to turn left in this situation?

Yes, only if the car develops maximum speed.

No, by no means.

✓ Yes



1002. How should you act in this situation?

✓ I take my foot off the gas pedal (it doesn't give gas).

It should continue at the same speed.

I don't do anything, since the pedestrian is old.

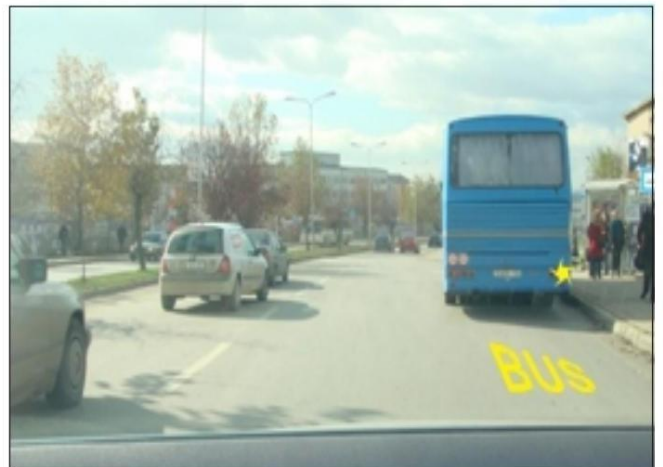


1003. What precautions should you take in this situation?

I have to drive at high speed next to the bus

I have to stand behind the bus until passengers get on and off.

✓ On pedestrians who come out in front and behind the bus and can cross the road.



1004. **What you should consider in this situation?**

In reducing the lateral safety distance.

✓ I will be ready to respond if needed.

It will use the acoustic signal (horn) to get pedestrians out of the way.



1005. **How should you act in this situation?**

I have to stop to give way to the pedestrian.

✓ I will continue to move right without stopping, but with extra caution.

It should only move straight



1006. **How should you act in this situation?**

✓ Brake

I should continue at the same speed

I do nothing, as the cyclist should not move on the road.



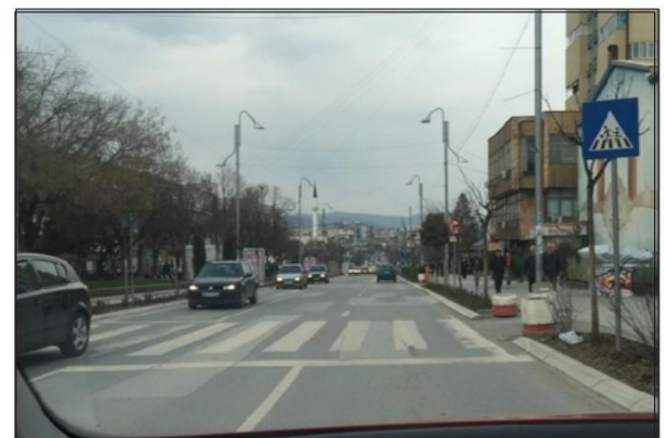
1007. **What should you consider in this situation?**

In left lane change

I have to speed up as there are no pedestrians in the crosswalk

As needed, I will reduce speed and be ready to brake.

✓



1008. **What to keep in mind while driving on the highway in this situation?**

In limited field of view.

I am prohibited from overtaking



In prohibition of semi-circular return.



1009. **How should you act in this situation?**



I will stop to give the pedestrian the right of way.

Continuing driving without stopping

With an acoustic signal (horn) I will warn the pedestrian to leave the road.



1010. **How should you act in this situation?**

One should move quickly as pets pose no danger.

I will use the acoustic signal (horn) to get the animals out of the road.



I will reduce speed as needed and be ready to brake.



1011. **What should you keep in mind while driving in the tunnel in this situation?**

You should use high beams.

In prohibition of overtaking.



In speed adaptation and adaptation of the eyes from light to darkness.





1012. **What you should consider in this situation?**

I am obliged to stop to give priority to the passage bus.

I have to change the traffic lane to the left.

✓ I have priority over the bus.



1013. **How should you act in this situation?**

✓ I will react in time if necessary, brake..

It should continue at the same speed.

I don't do anything, the cyclist is on the sidewalk.



1014. **What you should keep in mind while driving the vehicle in this situation?**

In the road narrowing from the left side.

✓ On the dangerous left turn.

In the mountain pass.



1015. **What should you consider in this situation.**

Every time I have to stop before the sign.

✓ I will give priority to the passage of means which

I have the right of way over vehicles moving at the intersection





1016. **Should the safety distance be increased in this situation?**

Yes, limited view of the road.

✓ Yes, the braking distance is extended.

Yes the braking distance is reduced.



1017. **What will you do when bus outside the urban area has signalled to enter the road?**

✓ Drive with extra caution, as pedestrians may stop on the road.

I have to allow the bus to enter traffic.

I have to stop in the spot until the bus stops the indicator of direction



1018. **Which action is correct in this situation?**

I take my foot off the gas pedal (you don't press gas pedal).

✓ Take your foot off the gas pedal (don't give it gas).

I do not undertake anything, the child is on the sidewalk.



1019. **What should you consider in this situation.**

✓ I will stop as necessary and give priority to pedestrians.

I must continue at a steady pace

With an acoustic signal (horn) I will warn the pedestrian to leave the road.

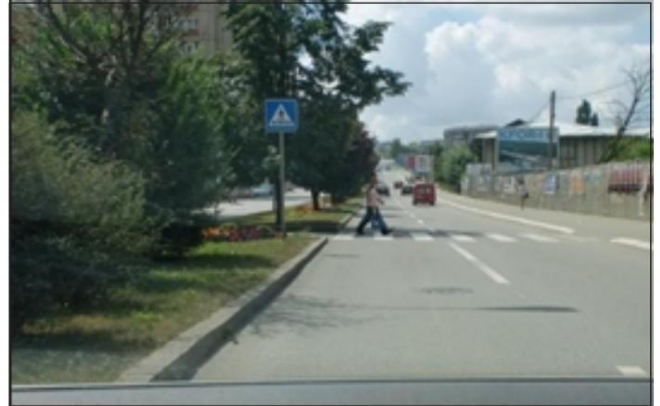


1020. **Should you give priority to pedestrians in this situation?**

No. I will use the acoustic sign (source).

✓ Yes.

Yes, only if they are children.



1021. **Do you have to give priority to the bus that entered the road from the stop, outside the urban areas?**

✓ No.

Yes.

Yes, only at night.



1022. **In which cases is it allowed to use lane No. 1 on the highway?**

For the movement of vehicles that cannot move at a speed over 60 km/h.

For overtaking vehicles that move very slowly.

✓ For mandatory stopping in case of vehicle breakdown.



1023. **When driving on the highway as in this situation, which lane of traffic you should drive through.**

In bar No. 1.

✓ In bar no. 2.

In strip no. 3 if it is free.



1024. **What should you consider in this situation?**

I do nothing as the pedestrian does not represent danger

I should continue at the same speed.

✓ I will observe (follow) the pedestrian on the sidewalk.



1025. **What should you consider in this situation?**

I will stop until the pedestrian passes.

It must move at the maximum speed that the car develops.

✓ I will watch (wa-llk) pedestrians on the sidewalk.



1026. **Which behavior is right in this situation?**

✓ I take my foot off the gas pedal (I don't give it gas).

It should move at the same speed

I brake hard.



1027. **What precautions will you take in this situation?**

✓ I will stop to give priority to the vehicle coming from the opposite direction of traffic.

Traffic stop in both directions.

The road where the traffic develops in one direction.





1028. **What should you consider in this situation.**

I will continue moving in front of the red car.



I will give priority to passing the red car.

Sign "priority road crossing.



1029. **What should you consider in this situation**

Near the narrowing of the road on the right side.

In traffic stop for cars.



Prohibition of overtaking vehicles, except motorcycles without side trailers.



1030. **What should you consider in this situation?**

I don't undertake anything, I pass the obstacle easily.



With increased caution, he crossed the pedestrian crossing.

It should continue at the same speed.



1031. **What should you consider in this situation?**



Road diversion

Dead end.

Mountain pass.



1032. **What should you consider in this situation?**

Mountain pass.

✓ The tunnel is 500 m away from the sign.

In the part of the road where overtaking is allowed.



1033. **What precautions should you take in this situation?**

I must take my foot off the gas pedal (you don't press gas pedal).

In the vicinity, the road narrows on both sides.

✓ At the intersection with the secondary road at right angles

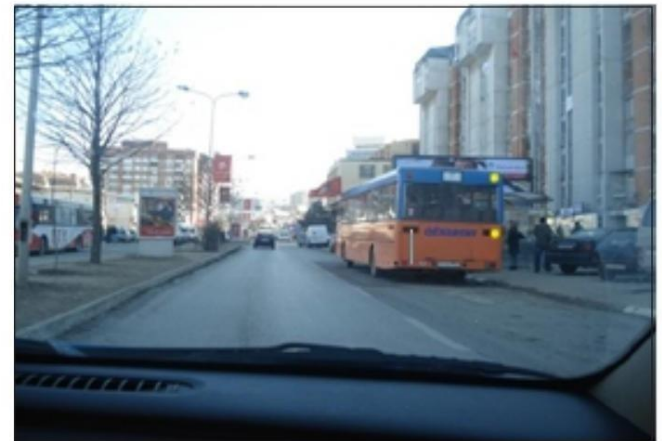


1034. **How will you act in this situation?**

I will stand behind the bus and wait until it departs from bus stop.

I have to continue moving at increased speed, since the bus is stopped at the bus stop.

✓ I will proceed with increased caution.



1035. **What should you consider in this situation.**

✓ On bumpy roads, speed is reduced as needed

Road junction from the left side.

Near the tunnel.



1036. **What should you consider in this situation?**

Traffic stop in both directions.

The road where the traffic develops in one direction.

- ✓ I have the right of way in relation to the vehicle moving from the opposite direction.



1037. **How will you act in this situation?**

- ✓ I will stop before the intersection.

It must continue moving without stopping.

I will turn on all direction indicators



1038. **Which behavior is right in this situation?**

- ✓ If there is no vehicle coming from behind, I will increase the lateral distance.

It should continue at the same speed

Do nothing, the pedestrian must move out of the road.



1039. **What precautions should you take in this situation?**

- ✓ I will slow down as needed.

I have to stop instead to watch the actions of the pedestrians.

It should continue moving at increased speed.





1040. **Outside the urban area on the national road, you stopped the vehicle because of the defect. What precautions should you take?**

On turning on the left direction indicator.

In placing the safety triangle behind the vehicle at a distance of at least 200 meters.

✓ In placing the safety triangle behind the vehicle at a distance of at least 30-50 meters.



1041. **What precautions should you take in this situation?**

I have to stop at the sign.

I am not allowed to change lanes.

✓ Stopping and parking prohibition starts from the place where the sign is placed.



1042. **What precautions should you take in this situation?**

✓ I am allowed to move straight and right.

Traffic stop for pedestrians

I am allowed to change lanes.



1043. **Which behavior is right in this situation?**

I take my foot off the gas pedal (you don't press gas pedal).

I have to take my foot off the gas pedal (no gas).

✓ Continue to drive more carefully.



1044. **Traffic jammed. Which behaviour is right in this situation?**

I have to continue moving, the light is green at the traffic light.

✓ I have to stop before the intersection.

I am not allowed to rear-end vehicles.



1045. **What should you consider in this situation?**

✓ At a distance of 80 m from the railway crossing without protective or semi-protective.

At a distance of 240m from the railway crossing without protective or semi-protective

Near the tram c-crossing.



1046. **Will you allow the bus to enter the traffic lane in the situation as in the picture?**

No only outside urban areas.

✓ Yes.

No, never.

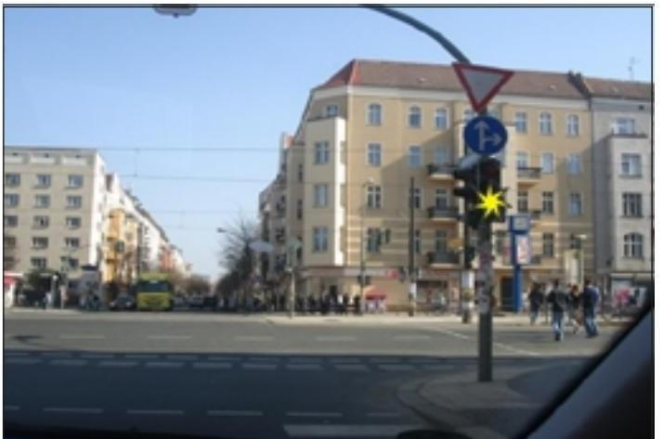


1047. **The flashing yellow light is on at the traffic light, are you allowed to turn right?**

No, noy any canes.

Yes, but I have to wait until the traffic light turns green.

✓ Yes, but priority must be given to pedestrians.





1048. **What should you consider in this situation?**



I will observe the behavior of the pedestrian.

Must increase speed.

I have to stop there.



1049. **What should you consider in this situation?**

Traffic stop for the children.



Running path for children.

You may encounter children as necessary reduce speed.



1050. **When should two safety triangles be placed, as in the photo?**

In cases of stopping the vehicle for passengers to drop off.



In the case of stopping the vehicle on the road, which carries hazardous materials, due to the defect.

During road works.



1051. **What should you consider in this situation?**



Slippery road due to snow.

I will brake hard while turning right.

I have to stop in front of the traffic sign.





1052. Which behavior (action) is right?

✓ Take your foot off the gas pedal (don't give it gas).

It should continue at the same speed.

Nothing was done, pedestrians should move on the sidewalk.



1053. What should you consider in this situation?

I will use the acoustic signal (source) and continue the movement.

I have to stop in place to observe the movement of the animals.

✓ It will increase caution, if necessary it will stop the car.

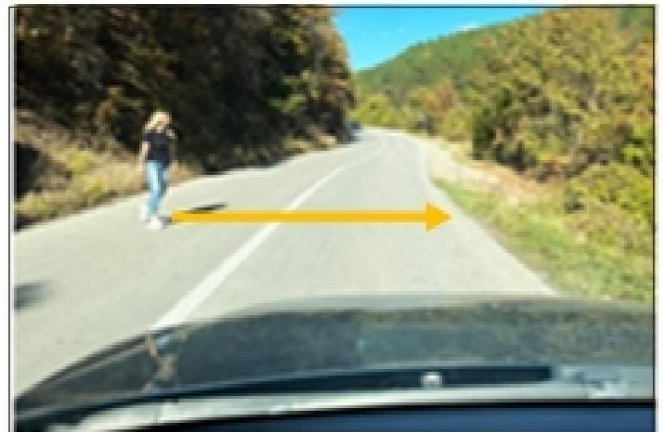


1054. Which behavior (action) is right?

✓ Brake.

It should continue at the same speed.

It does not do anything, the pedestrian should not move on the road.



1055. What should you consider in this situation?

In the field the limited view of the road.

✓ It will increase the caution, the braking distance is extended.

I will continue the movement, increasing the speed, since the road is free.



1056. **What should you consider in this situation?**

In the mountain neck.

✓ Narrowing of the road from both sides, speed adjustment

Starting from the sign, traffic begins to develop in a narrow road from the right side



1057. **When should two safety triangles be placed, as in this situation?**

In the event of the car stopping on the road while disembarking passengers.

During road works.

✓ When the convoy stops on the road



1058. **What should you consider in this situation?**

In the field the limited view of the road.

I will use the acoustic signal (horn) and continue driving at the same speed.

✓ Pedestrians can cross the street.



1059. **What should you consider in this situation?**

✓ A pedestrian may come out between parked vehicles.

I am allowed to switch to the left bar.

I need to reduce the safety distance to the vehicle in front.





1060. Which behavior is right?

✓ Ready for braking.

It should continue at the same speed.

I do nothing as the scooter (trotinet) is not dangerous.



1061. Which behavior (action) is right?

✓ Brake.

It should continue at the same speed.

It doesn't do anything, pedestrians don't move straight.



1062. What behavior is right?

I will use the acoustic signal (horn), for driver violating traffic rule.

✓ I take my foot off the gas (I don't give it gas) and I give priority to the vehicle entering the traffic.

It should continue at the same speed.

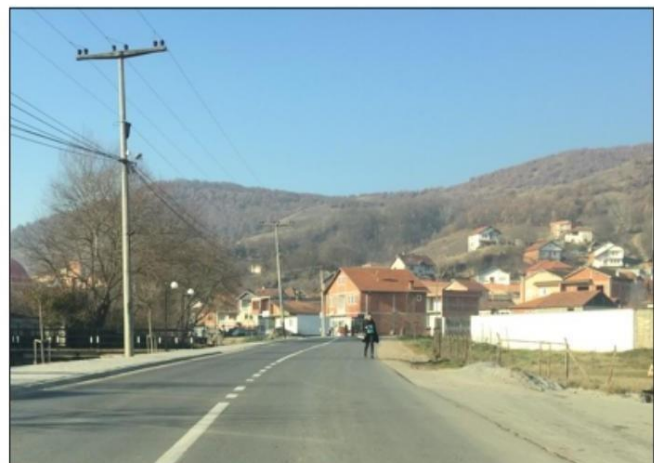


1063. Which behaviour is right in this situation?

✓ Take your foot off the gas pedal (don't give it gas).

It should continue at the same speed.

Do not do anything, pedestrians should leave the road.



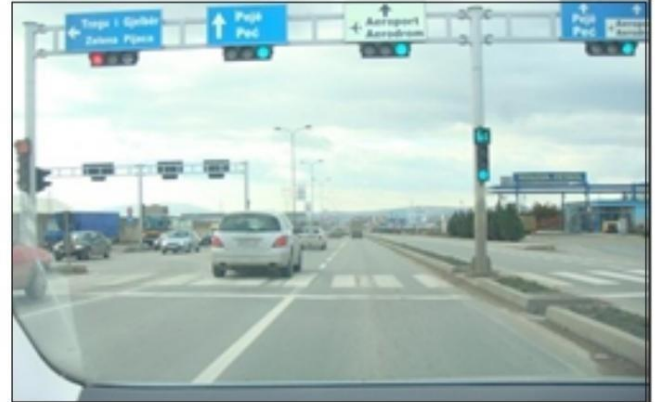


1064. **What should you consider in this situation?**

- ✓ To continue the movement without stopping after it is lit green light at the traffic light

I have to stop before the intersection.

I am allowed to change lanes.



1065. **What should you consider in this situation?**

- ✓ Be careful, you may encounter cyclists and pedestrians on the road, because their path has ended.

Part of the road where the movement of cyclists and pedestrians is prohibited.

Action path for cyclists and pedestrians.



1066. **How are the cyclists moving in this situation?**

Right.

- ✓ Not right.

Only during the day.



1067. **Which behaviour is right in this situation?**

I am not allowed to enter this street.

All direction indicators must be on

- ✓ I will continue moving straight, pedestrians must move on the sidewalk.



1068. **What should you consider in this situation?**

Parking of cars on the sidewalk is allowed.

✓ Forbidden stopping and parking on both sides of the road is prohibited.

Stopping in front of traffic signs.



1069. **How to mark the vehicle stopped on the highway, due to defects?**

The safety triangle must be placed at a distance of at least 200 m, behind the prohibited vehicle.

The safety triangle must be placed at a distance of at least 50 m, behind the prohibited vehicle.

✓ All direction indicators must be on.

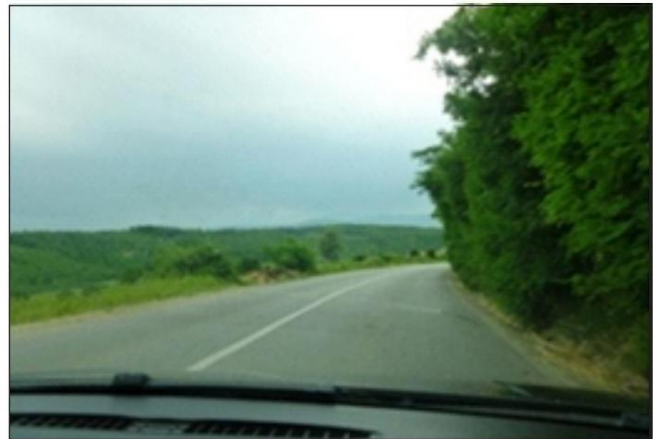


1070. **While driving, you encountered a situation like this in the photo, What should you consider?**

✓ A slow-moving vehicle may be found behind the curve.

Braking hard in the middle of the turn.

Bar changing is allowed with extra care.



1071. **What should you consider in this situation?**

✓ I may run into pets on the street.

By reducing the safety distance to the vehicle moving ahead.

in the wilds on the road.



1072. **How will you do if the ball rolls in front of you?**

- ✓ I will slow down and be ready to brake as the kids may run after the ball.

I will use the acoustic signal (horn) and continue moving at the same speed.

Since the children are not in the way, I will continue at increased speed.



1073. **What should you consider in this situation?**

- ✓ Dangerous left turn and speed adjustment depending on the severity of the curve.

At the dangerous right turn.

Increasing the speed at the entrance of the turn.



1074. **How to act in this situation?**

- ✓ Vehicles behind the bus must stop until children enter or exit the bus.

The bus must move backwards.

Vehicles moving in front of the bus must continue moving at increased speed.



1075. **What should you consider, in this situation?**

Prohibition of changing lanes

- ✓ I will move with increased caution, adjusting the speed of movement.

I will use the high beams for road lighting, so that the road can be seen better.





1076. **What should you consider in this situation?**

- ✓ Vehicles moving in front of the bus must stop while children enter or exit the bus.

The bus must move backwards.

Vehicles moving in front of the bus must continue moving at increased speed.



1077. **What should you consider in this situation?**

Truck parking.

- ✓ Increased attention to pedestrians.

Bus stop.



1078. **What should you consider in this situation?**

I am allowed to move left.

The road is free, I will continue the movement without stopping.

- ✓ I am allowed to move straight and right.



1079. **What should you consider in this situation?**

- ✓ I am allowed to continue moving only straight.

I am allowed to switch to the left bar.

I am allowed to switch the right bar.



1080. **What should you consider in this situation?**

✓ I'll move to the left lane.

I have to stop in place until there are no cars on the road.

I am not allowed to change lanes.



1081. **What should you keep in mind in this situation?**

✓ The road where the traffic takes place in two directions.

In accordance with the speed of movement, the pedestrian can suddenly enter the street.

I am not allowed to continue moving.



1082. **Is it allowed to move across double full longitudinal lines?**

Yes.

✓ No.

Yes, if other participants do not get in the way.



1083. **What should you consider in this situation?**

I will continue moving without stopping since the road is free.

✓ I will respect the "No turning left" sign.

I will definitely turn left.



1084. Which behavior is right in this situation?

I must take his foot off the gas pedal (don't give him gas).

It should continue at the same speed.

✓ I don't do anything, the road is free, continue the movement respecting the maximum speed limit

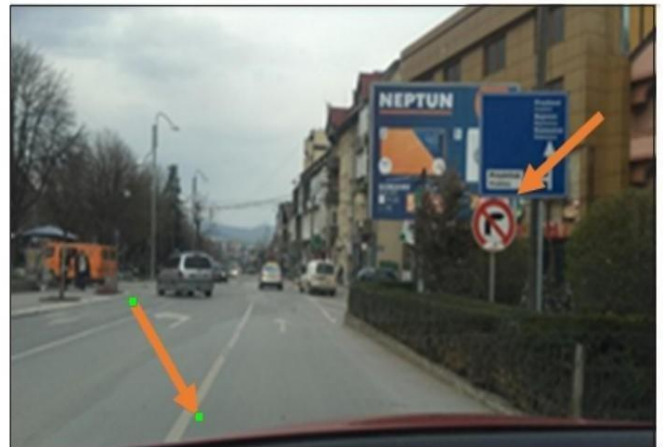


1085. What should be considered in the situation as in the picture?

I have to turn right.

✓ It should move straight.

I can change lanes.



1086. What should you consider when driving outside the urban area, as in this situation?

At longitudinal safety distance.

✓ At a safety distance of at least 200 meters.

I will overtake the truck as the road is clear.



1087. How should you act in this situation?

I will use the acoustic signal (horn) to warn pedestrians.

✓ I will stop to let the pedestrians go.

I will continue the movement without stopping at all.





1088. **What should you consider in this situation?**

✓ In a double turn or multiple turn, where the first turn is on the left.

In the part of the road where I am prohibited from overtaking.

At recommended speed of movement.



1089. **What should you consider in this situation?**

In the parking lot for vehicles.

In the sports field where children play.

✓ In the part of the road where children can play.



1090. **What should you consider in this situation?**

✓ I am allowed to move straight or right.

I am allowed to change lanes.

I have to stop before the intersection.

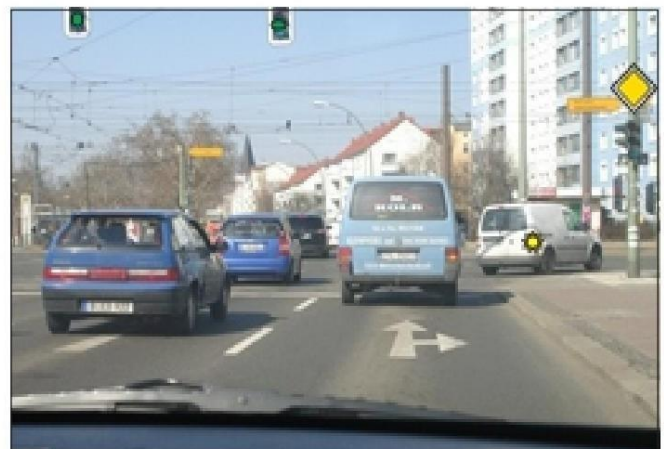


1091. **How will you act in this situation?**

I will stop before the cross.

✓ I will continue moving straight or right.

I will continue to move only to the left.



1092. **What should you consider in this situation?**

The part of the road where overtaking is prohibited.

✓ The contact of the tires with the road is significantly reduced (slippery).

I am not allowed to change lanes.



1093. **What should you consider in this situation?**

I brake.

✓ The proximity of the place where I can meet children on the street and will continue driving with increased caution



1094. **The driver of the car enters the traffic moving backwards, how do you assess this situation.**

Right, if it does not obstruct other traffic participants.

Straight, if I turn on all direction indicators.

✓ No, right.



1095. **Which behavior is right in this situation?**

✓ I brake.

I should continue at the same speed

I don't do anything, the road is free.





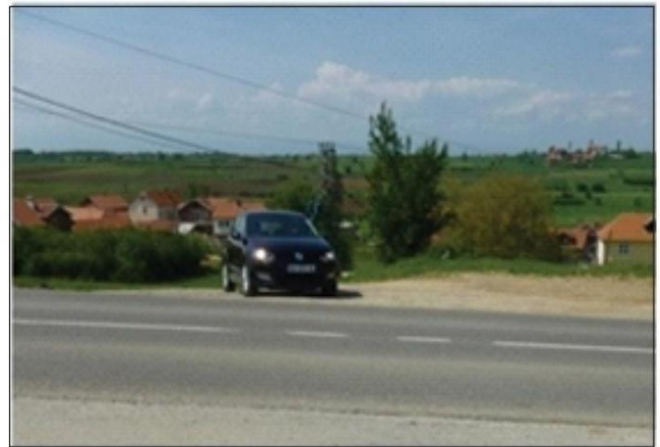
1096. **Which vehicle is moving straight?**

- ✓ Vehicle no. 1.
- ✓ Vehicle no. 2.
- ✓ Vehicle no. 3.



1097. **What should you consider when you want to enter traffic from the dirt road, in this situation?**

- ✓ I will give priority to passing all vehicles moving on the road.
- I have the right of way over vehicles moving on the road.
- It will enter the road without signaling with direction indicators since the road is free.



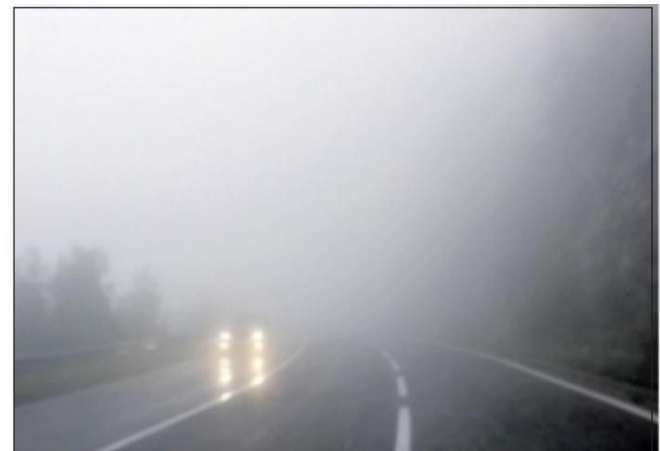
1098. **What should you consider while driving in this situation?**

- It must move at the maximum speed that the car develops.
- It is not allowed to move on the tram track.
- ✓ Movement on the tram track is allowed.



1099. **What should you consider while driving in this situation?**

- In adjusting the movement speed.
- ✓ Pedestrians and vehicles that do not have their own lighting may not be noticed in time.
- Will use high beams while driving.



1100. **What should you consider in this situation?**

I am not allowed to change lanes.

✓ I will reduce the speed and we will be ready for braking.

I have to stop in place until the children pass.



1101. **What are the possible dangers while driving on a snowy road??**

Use of winter equipment

Reaction time increases

✓ Traffic signs are covered.



1102. **What you should consider in this situation?**

✓ For turning right, the traffic sign is respected.

I have to stop before the intersection.

I have to brake hard.



1103. **What should you consider in this situation?**

Mountain pass.

✓ He adjusted his speed in the vicinity of the roundabout.

Minimum movement speed.





2001. The traffic sign warns of the general danger on the road.



Correct.

Incorrect.



2002. The traffic sign warns of the proximity of the dangerous left turn.



Correct.

Incorrect.



2003. The traffic sign warns of the proximity of the dangerous left turn.

Correct.



Incorrect.



2004. The traffic sign warns of consecutive first right turns.



Correct.

Incorrect.



2005. The traffic sign warns dead ends.

Correct.



Incorrect.



2006. The traffic sign warns of narrowing of the road from the right side.



Correct.

Incorrect.



2007. The traffic sign warns of uneven roads.



Correct.

Incorrect.



2008. The traffic sign warns of parking the car on the sidewalk.

Correct.



Incorrect.



2009. The traffic sign warns of the slippery road.

- ✓ Correct.  
Incorrect.



2010. The traffic sign warns of tram route.

- Correct .  
✓ Incorrect .



2011. The traffic sign warns of stone collisions.

- Correct.  
✓ Incorrect.



2012. The traffic sign warns of the proximity of the marked pedestrian crossing.

- ✓ Correct.  
Incorrect



2013. The traffic sign warns of the proximity of the marked pedestrian crossing.

- Correct  
✓ Incorrect



2014. The traffic sign warns of the presence of children on the road.

- ✓ Correct .  
Incorrect



2015. The traffic sign indicates a traffic stop for cyclists.

- Correct.  
✓ Incorrect.



2016. The traffic sign indicates the part of the road where the movement of animals is prohibited without supervision.

- Correct.  
✓ Incorrect.



2017. The sign of the triangle warns of the uneven road.

- Correct.  
✓ Incorrect.





2018. The traffic sign warns of a dangerous underpass.

✓ Correct.

Incorrect.



2019. The traffic sign warns of the proximity of the intersection regulated by traffic lights.

✓ Correct.

Incorrect



2020. The traffic sign warns of the part of the road where the traffic develops in one direction.

Correct.

✓ Incorrect.



2021. The traffic sign warns of the distance between vehicles.

Correct.

✓ Incorrect



2022. The traffic sign warns of the proximity of the railway crossing with the terminus.

✓ Correct

Incorrect



2023. The traffic sign warns of the underpass for road vehicles.

Correct

✓ Incorrect



2024. The traffic sign warns of the tram stop.

Correct.

✓ Incorrect.



2025. The traffic sign warns the place where wild animals cross the road

Correct.

✓ Incorrect.



2026. The traffic sign warns of road lighting.

Correct.

Incorrect



2027. The traffic sign warns of the railway crossing.

Correct

Incorrect



2028. The traffic sign warns of the narrowing of the road from the left side.

Correct.

Incorrect.



2029. The traffic sign warns of the drawbridge.

Correct.

Incorrect



2030. The traffic sign warns of the drawbridge.

Correct

Incorrect



2031. The traffic sign warns of stone collisions.

Correct

Incorrect



2032. The traffic sign announces the location of the airport.

Correct.

Incorrect.



2033. The traffic sign warns of the railway crossing with protection or semi-protection.

Correct.

Incorrect.



2034. The traffic sign warns of the part of the road where the movement of pedestrians is prohibited.

Correct.

Incorrect.





2035. The traffic sign warns of the road closure.

Correct.



Incorrect.



2036. The traffic sign warns of the tunnel or gallery on the road.



Correct.

Incorrect.



2037. The traffic sign warns the approach of the intersection with a roundabout.



Correct.

Incorrect.



2038. The traffic sign warns of the part of the road where stones can fall (collapse) on the road.



Correct.

Incorrect.



2039. The traffic sign indicates road works.



Correct.

Incorrect.



2040. The traffic sign warns of dangerous uphill driving.



Correct.

Incorrect.



2041. The traffic sign warns of the intersection of roads of equal importance.



Correct.

Incorrect.



2042. The traffic sign warns of the intersection of roads of equal importance.

Correct.



Incorrect.



2043. Which sign warns of the proximity of the place where side winds often blow?



Correct.

Incorrect.



## Traffic Signs

2044. Which sign warns of the proximity of the place where there may be frost on the road?



2045. Which sign warns of a dangerous situation?



2046. Which traffic signals warn of road congestion?



2047. Which traffic sign warns of the part of the road where stones can fall (collapse) on the road?



2048. Which traffic sign indicates road works.



2049. Which traffic sign warns of the slippery road?



2050. Which traffic sign warns the intersection of the main road with the secondary road under the right angle?



2051. Which traffic sign warns iron crossing with shield or semi-protective?



2052. Which sign warns of the planes' runway?



## Traffic Signs

2053. Which sign warns of the closeness of where the street bank unstable?



2054. Which sign warns of dangerous downpoise?



2101. The traffic sign indicates the mandatory stop.

✓ Correct.

Incorrect.



2102. The traffic sign indicates the road with priority of passage.

Correct.

✓ Incorrect



2103. The traffic sign indicates the end of all stops.

Correct

✓ Incorrect



2104. The traffic sign indicates traffic stop in one direction.

✓ Correct .

Incorrect .



2105. The traffic sign indicates the road for the movement of cars.

Correct.

✓ Incorrect.



2106. The traffic sign indicates the traffic lane for the bus.

Correct.

✓ Incorrect.



2107. The traffic sign indicates the parking space for trucks.

Correct.

✓ Incorrect.





2108. The traffic sign indicates a traffic stop for tankers.

✓ Correct.

Incorrect



2109. The traffic sign indicates a traffic prohibition for pedestrians.

✓ Correct.

Incorrect



2110. The traffic sign indicates a traffic stop for vehicles that exceed the specified width.

✓ Correct.

Incorrect.



2111. The traffic sign indicates a traffic ban for vehicles that exceed the specified height.

Correct.

✓ Incorrect



2112. The traffic sign indicates a traffic ban for vehicles that exceed the specified height.

✓ Correct

Incorrect



2113. The traffic sign indicates a traffic ban for vehicles that exceed the specified axle load.

✓ Correct

Incorrect



2114. The traffic sign indicates a traffic stop for vehicles that exceed the specified length.

✓ Correct.

Incorrect.



2115. The traffic sign indicates a traffic stop for vehicles that exceed the specified length.

Correct.

✓ Incorrect.



2116. The traffic sign indicates the mandatory right turn.

✓ Correct

Incorrect



2117. The traffic sign indicates the highway.

Correct

✓ Incorrect



2118. The traffic sign indicates the wheelbarrow.

Correct

✓ Incorrect



2119. The traffic sign indicates a section of the road where tractors should move.

Correct

✓ Incorrect



2120. The traffic sign indicates a traffic stop for mopeds.

✓ Correct

Incorrect



2121. The traffic sign indicates a traffic prohibition for cyclists.

✓ Correct

Incorrect



2122. The traffic sign indicates the part of the road where cyclists move in groups.

Correct

✓ Incorrect



2123. The traffic sign indicates the part of the road where carts must move.

Correct

✓ Incorrect



2124. The traffic sign indicates the traffic prohibition for all motorized vehicles.

✓ Correct

Incorrect



2125. The traffic sign points towards Obligatory right.

Correct.

✓ Incorrect.



2126. The traffic sign indicates semi-circular return ban.

✓ Correct .

Incorrect .



2127. The traffic sign indicates the maximum speed limit.

✓ Correct.

Incorrect.



2128. The traffic sign indicates the part of the road for the movement of cars.

Correct.

✓ Incorrect .



2129. The traffic sign indicates the prohibition of overtaking for transport vehicles-trucks.

✓ Correct

Incorrect .



2130. The traffic sign indicates passage without stopping at the customs.

✓ Correct .

Incorrect .



2131. The traffic sign indicates passage without stopping at the customs.

Correct.

✓ Incorrect.



2132. The traffic sign indicates the road where the traffic develops in one direction.

Correct.

✓ Incorrect.



2133. The traffic sign indicates the part of the road where the use of acoustic signs is allowed.

✓ Correct.

Incorrect.





2134. The traffic sign indicates the right of way for vehicles from the opposite direction.

✓ Correct.

Incorrect



2135. The traffic sign indicates the prohibition of stopping and parking.

✓ Correct .

Incorrect



2136. The traffic sign indicates the parking area.

✓ Correct.

Incorrect.



2137. The traffic sign indicates parking prohibition on odd days.

✓ Correct.

Incorrect .



2138. The traffic sign indicates parking prohibition on odd days.

Correct

✓ Incorrect .



2139. The traffic sign indicates the use of radar.

Correct .

✓ Incorrect .



2140. The traffic sign indicates the speed recommendation.

Correct.

✓ Incorrect.



2141. The traffic sign indicates mandatory spare tires.

Correct.

✓ Incorrect.



2142. The traffic sign indicates the path for cyclists.

✓ Correct.

Incorrect.



2143. The traffic sign indicates prohibition of movement for pedestrians.

Correct.

Incorrect



2144. The traffic sign indicates the path for pedestrians and bicycles.

Correct .

Incorrect .



2145. The traffic sign indicates the crossing for riders.

Correct.

Incorrect.



2146. The traffic sign indicates the mandatory direction.

Correct.

Incorrect .



2147. The traffic sign indicates a traffic stop in this direction.

Correct

Incorrect .



2148. The traffic sign indicates the prohibition of traffic in this direction.

Correct .

Incorrect .



2149. The traffic sign indicates the bypass on the road.

Correct.

Incorrect.



2150. The traffic sign indicates a semi-circular return.

Correct.

Incorrect.



2151. The traffic sign indicates the place where right and left movement is allowed.

Correct.

Incorrect.



2152. The traffic sign indicates the place where movement to the right or to the right is allowed.

✓ Correct.

Incorrect.



2153. The traffic sign indicates the road where the traffic takes place in two directions.

Correct.

✓ Incorrect.



2154. Traffic table shows the obligatory crossing sideways right.

Correct.

✓ Incorrect.



2155. Traffic table shows the obligatory crossing sideways right and left.

✓ Correct.

Incorrect



2156. The traffic sign indicates the intersection with a roundabout.

✓ Correct

Incorrect



2157. Which sign stops traffic for all vehicles except motorcycles without side trailers?



✓

2158. Which sign indicates a traffic stop for vehicles (trucks)?



✓



2159. Which sign indicates a traffic stop for vehicles pulling attachments?



2201. The traffic sign indicates the obligation to turn on the dipped beam when the vehicle participates in traffic.

Correct.

Incorrect.



2202. The traffic sign indicates the marked crossing cyclists.

Correct.

Incorrect.



2203. The traffic sign indicates the prohibition of movement for cyclists.

Correct.

Incorrect



2204. The traffic sign indicates the prohibition of the movement of children on the road.

Correct

Incorrect



2205. The traffic sign indicates ascending steps.

Correct

Incorrect



2206. The traffic sign indicates the road with traffic in one direction of movement.

- Correct.  
 Incorrect



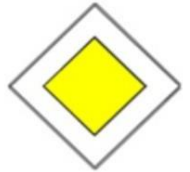
2207. The traffic sign indicates a two-way road.

- Correct .  
 Incorrect.



2208. The traffic sign indicates the road with priority passage.

- Correct.  
 Incorrect.



2209. The traffic sign indicates the right-of-way.

- Correct.  
 Incorrect .



2210. The traffic sign indicates the minimum permitted speed.

- Correct  
 Incorrect .



2211. The traffic sign indicates the maximum speed limit.

- Correct  
 Incorrect .



2212. The traffic sign indicates the part of the road where overtaking is prohibited.

- Correct.  
 Incorrect.



2213. The traffic sign shows the part of the road where overtaking is not allowed for trucks.

- Correct.  
 Incorrect.



2214. The traffic sign shows the place where the speed limit ends.

✓ Correct.

Incorrect.



2215. The traffic sign indicates the end of the minimum speed limit.

✓ Correct.

Incorrect.



2216. The traffic sign indicates the place where the ban on the use of the camera ends.

Correct.

✓ Incorrect.



2217. The traffic sign indicates the toy park for children where they play with ball.

Correct.

✓ Incorrect



2218. The traffic sign indicates the end of the quiet traffic zone.

Correct

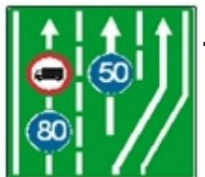
✓ Incorrect



2219. The traffic sign indicates the lineup of vehicles.

Correct

✓ Incorrect



2220. The traffic sign indicates the closure (reduction) of the traffic lane.

✓ Correct

Incorrect





2221. The traffic sign indicates that you are not allowed to move at a speed lower than 80 km/h.

- ✓ Correct.  
Incorrect



2222. The traffic sign indicates the recommended speed.

- ✓ Correct .  
Incorrect



2223. The traffic sign indicates the hospital.

- ✓ Correct.  
Incorrect.



2224. The traffic sign shows the International red cross.

- Correct.  
✓ Incorrect .



2225. The traffic sign indicates the location where all the restrictions on that road end.

- ✓ Correct  
Incorrect



2226. The traffic sign indicates the obligation to have a spare tire.

- Correct  
✓ Incorrect



2227. Traffic sign indicates the end of the bicycle path.

- Correct.  
✓ Incorrect.



2228. The traffic sign shows children on the road.

- Correct.  
✓ Incorrect.



2229. The traffic sign indicates the part of the road where riding is prohibited.

Correct.

✓ Incorrect.



2230. The traffic sign indicates the maximum speed limit zone.

Correct.

✓ Incorrect.



2231. The traffic sign indicates the prohibition of traffic for certain types of vehicles on the highway (bicycles, mopeds, tractors...).

Correct.

✓ Incorrect.



2232. The traffic sign indicates the intersection with a roundabout.

✓ Correct.

Incorrect



2233. The traffic sign indicates the priority of passage in relation to vehicles coming from the opposite direction.

Correct

✓ Incorrect



2234. The traffic sign indicates the mandatory direction for Mitrovica.

Correct

✓ Incorrect



2235. The traffic sign indicates the national cave.

Correct

✓ Incorrect



2236. The traffic sign indicates the name of the port or harbor through which the road passes.

Correct.



Incorrect.



2237. The traffic sign indicates the lane lineup of vehicles according to the naming of urban zones.

Correct.



Incorrect.



2238. The traffic sign indicates the parking space on the street for buses.

Correct.



Incorrect.



2239. The traffic sign shows the bridge over the river.

Correct.



Incorrect



2240. The traffic sign indicates the end of the highway.



Correct

Incorrect



2241. The traffic sign indicates the traffic lane for the means of public transport of passengers (bus, taxi...).



Correct

Incorrect



2242. The sign shows the way in one direction

Correct



Incorrect





2243. The traffic sign shows the dead-end road.

Correct.  
Incorrect



2244. The traffic sign shows the number of the local road.

Correct .



Incorrect .



2245. The traffic sign indicates the historical monument.

Correct.

Incorrect.



2246. The sign indicates a mountain pass..

Correct.

Incorrect .



2247. The traffic sign indicates the regional road.

Correct

Incorrect .



2248. The sign indicates the national road.

Correct .

Incorrect .



2249. The traffic sign indicates the bus and taxi station.

Correct.

Incorrect.



2250. The traffic sign indicates the place where parking is prohibited.

Correct.

Incorrect.



2251. The traffic sign indicates the duration of parking.

✓ Correct.

Incorrect.



2252. The sign indicates traffic restrictions for vehicles.

Correct.

✓ Incorrect.



2253. The traffic sign indicates the end of the motorway.

✓ Correct.

Incorrect.



2254. The traffic sign indicates the first aid station.

Correct.

✓ Incorrect



2255. The sign indicates the bus stop location.

✓ Correct

Incorrect



2256. The traffic sign indicates the tram stop.

✓ Correct

Incorrect



2301. According to this situation, are pedestrians allowed to cross the road?

No



Yes



2302. What does the traffic light signal as in the picture?



Prohibition of crossing for pedestrians.

Free pedestrian crossing.

The traffic light does not work.



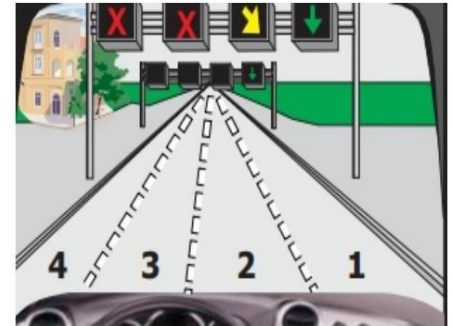
2303. What should you consider in this situation?

I am allowed to move through lane 3 and 4.



I am obliged from bar 2 to go to bar 1.

I can use any scroll bar.



2304. What does the continuous yellow light at the traffic light mean?



Prohibition of passage, except for vehicles that cannot stop safely in front of the traffic light.

Free pass.

All direction indicators on the vehicle must be on.



2305. What is the meaning of the flashing green light (intermittently) at the traffic light.



Warns the driver that the free pass will soon end.

Immediate stop.

The traffic light does not work.



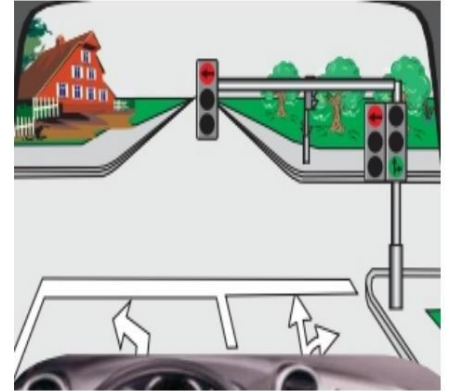


2306. In which directions are you allowed to move in this situation.

✓ Right.

✓ Right.

Left.



2307. Which Illuminated Sign indicates the free lane for movement?



✓

2308. What should you consider in this situation?



✓

2309. What does the continuous yellow light at the traffic light mean?



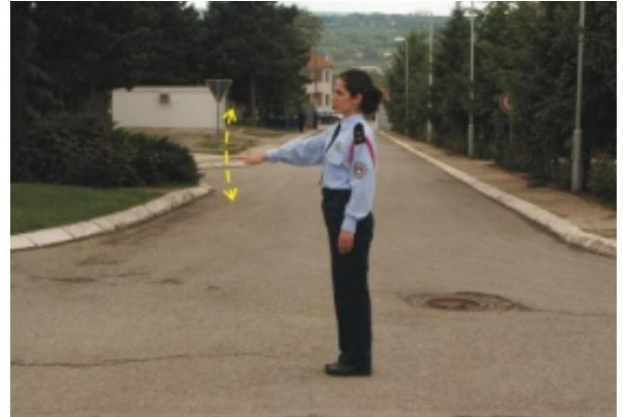
✓

2401. What does the police officer's position indicate?

Traffic participants must speed up the movement of their vehicle.

✓ Traffic participants must slow down the movement of their vehicle.

Traffic participants must stop their vehicle.

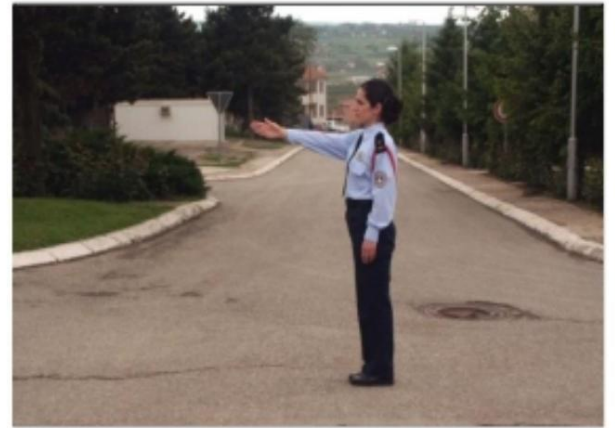


2402. Which traffic participants have free passage according to the position of the policeman?

Vehicles coming from the right side of the policeman.

✓ Vehicles coming from the left side of the policeman.

Vehicles that come in front of and behind the policeman's back.



2403. What does the raised hand of the policeman mean?

Traffic participants should move with increased caution.

The police order only applies to motorcycles.

✓ Prohibition for all traffic participants.



2404. How will you act when the vehicle overtakes you as in the photo?

I will continue moving at increased speed so as not to obstruct the vehicle.

It will illuminate all direction indicators.

✓ I will end up at the end of the road.



2405. What does the raised hand of the policeman as in the picture mean.

- ✓ Prohibition of passage for all traffic participants.
- Prohibition of crossing for pedestrians only.
- Pass left for all traffic participants.



2406. Which participants have free passage according to the position of the policeman.

- ✓ Participants moving in the direction of the wings.
- Participants moving towards the back.
- Participants moving towards the chest.



2407. What does the position of the policeman show?

- The truck must have all of its traffic lights on.
- ✓ The truck has free passage.
- The truck has been blocked.



2408. In which directions you are forbidden to move according to the position of the policeman?

- ✓ Right, straight and left.
- Only to the right.
- Just left.





2501. What does the dashed line on the road represent

- Allows overtaking.
- Dead end road..
- Stops overtaking.



2502. What does the line on the road represent?

- Allows vehicles to overtake.
- The place where the vehicle must stop.
- Prohibits overtaking of vehicles.



2503. What does a combined double line represent?

- Allows overtaking from both sides.
- Prohibition of overtaking from the side where the longitudinal line lies.
- The part of the road where the road narrows.



2504. What does a full double line represent?

- The end of the public road.
- It prevents vehicles from crossing the lines.
- Crossing the lines is allowed.



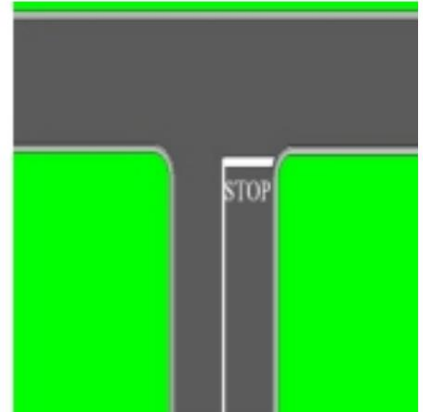
2505. How would you act in the situation as in the foto?



I will stop before the stop line.

I will continue moving carefully without stopping.

I have to change lanes.



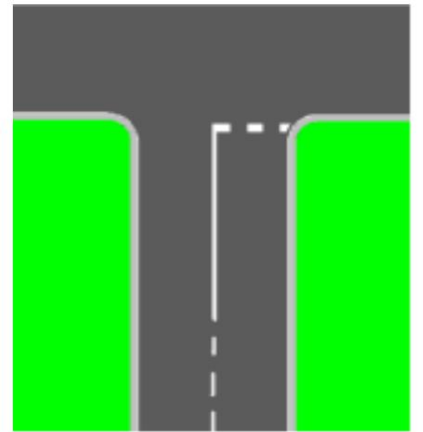
2506. How would you act in the situation as in the fig.?

I have to stop before the cross line.



I will proceed with increased caution and stop as necessary.

You must turn on all direction indicators



2507. What does a combined double line represent?

Allows overtaking from both sides.



Allows overtaking from the side where the interrupted longitudinal line is extended.

The part of the road where the road narrows.



2508. What does the intermittent line on the road represent?

The start of the road narrowing from two sides.



Sharing traffic lanes.

Prohibition of overtaking



3001. The distance between vehicles during overtaking should be significantly increased if the road is slippery.

Correct.



Incorrect.



3002. Cyclists should wear reflective clothing or have a light source while riding on roads with poor visibility.



Correct

Incorrect.

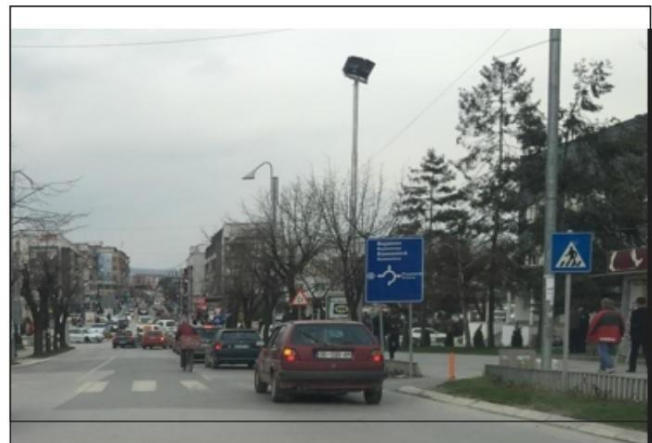


3003. The vehicle is allowed to stop in this situation, if there is not enough space behind the marked pedestrian crossing.

Correct.



Incorrect.



3004. The road has two lanes of traffic in one direction, overtaking is allowed in this situation.



Correct.

Incorrect .





3005. The safety distance between vehicles during overtaking outside urban areas should be at least 2 seconds..



Correct.

I didn't see it.



3006. In this situation, the road starts from the sign where the traffic is conducted in two way.



Correct.

Incorrect

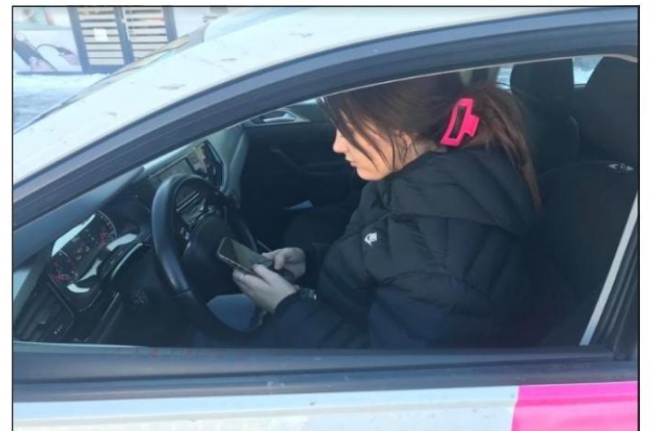


3007. In this situation, the response time is extended and the danger in traffic may not be eliminated



Correct.

Incorrect.

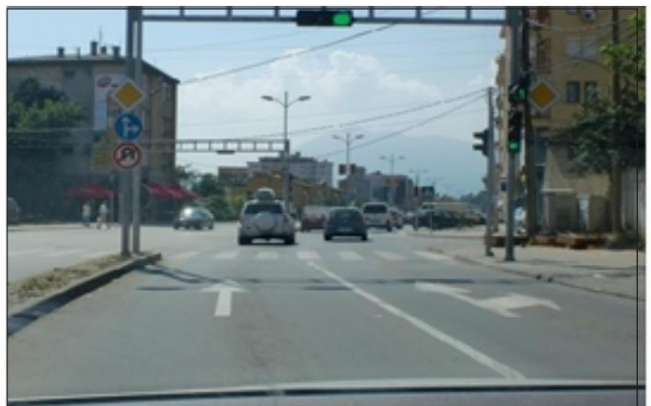


3008. The semi-circular turn is allowed in this situation.

Correct.



Incorrect



3009. The bunch of long lights illuminate the road in a length of at least 40-80 m m.

Correct.



Incorrect



3010. During cigarette ignition, dangerous situations in traffic can occur and the way of reaction is extended.

Correct



Incorrect



3011. The pedestrian outside the urban area moves straight, on the right side of the road in the direction of movement.

Correct.



Incorrect.



3012. Stopping and parking is allowed in this situation

Correct.



Incorrect





3013. Before entering from the dirt road to the asphalt road, you must remove the mud from the wheels.



Correct.

I didn't see it.



3014. The pedestrian outside the settlement is moving straight, on the left side of the road in the direction of movement



Correct

Incorrect



3015. Sign indicates obligatory direction for Kosovo.



Correct.

Incorrect.



3016. The distance from the moment of pressing the pedal to the complete stop of the vehicle is called the stopping distance.

Correct.



Incorrect



3017. In this situation, the driver will enable the pedestrian to cross the road even though they are moving in an incorrect manner.



Correct.

I didn't see it.



3018. In In this situation I am allowed to change the lane for a left if there are no vehicles behind..

Correct



Incorrect



3019. It is allowed to overtake the tractor in this situation even though it is the full longitudinal line on the road.



Correct.

Incorrect.

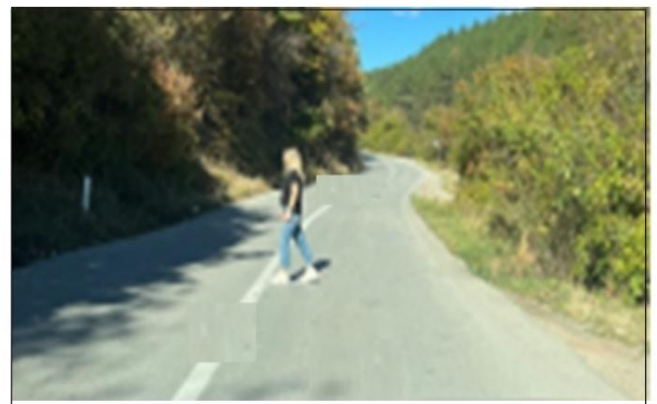


3020. Pedestrians can cross the road outside the settlement, if their crossing is more than 100 meters away.



Correct.

Incorrect



3021. In this situation, I will stop the car and observe the child's operations with the bicycle.

✓ Correct.

Incorrect



3022. Pedestrians can always cross the road within the settlement where there is no pedestrian crossing.

Correct

✓ Incorrect



3023. Elderly people are considered as dangerous participants in traffic because their movement is slow.

✓ Correct.

Incorrect.



3024. The vehicle driven by a disabled person must be marked with a corresponding sign.

Correct.

✓ Incorrect



3025. Stopping and parking of vehicles at bus stops is prohibited inside and outside the settlement.



Correct.

Incorrect



3026. Stopping and parking in this situation is prohibited.



Correct

Incorrect



3027. Semicircular turning in the tunnel is allowed, if the longitudinal line is interrupted.

Correct.



Incorrect.

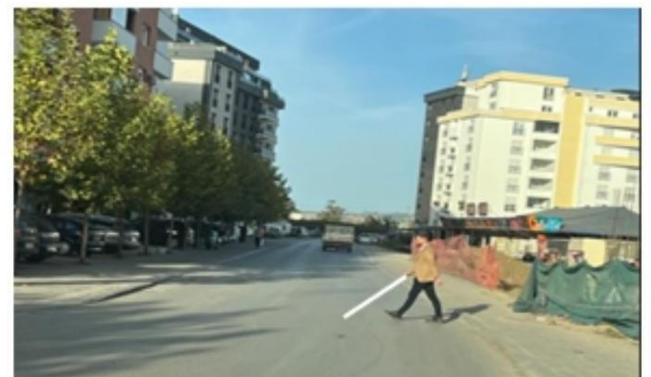


3028. I will enable blind persons to cross the road outside the pedestrian crossing.



Correct.

Incorrect





3029. The organized column of pedestrians is moving in the wrong direction to the right of the movement.

Correct.



I didn't see it.



3030. Overtaking is allowed in this situation, if the truck moves too slowly.

Correct



Incorrect



3031. This traffic situation has occurred due to the driver's lack of attention during the opening of the car door (not looking in the mirror and blind spot)..

Correct.



Incorrect.



3032. I will allow the blind person to cross the road outside the pedestrian crossing Who holds the white stick.



Correct.

Incorrect:



3033. It is allowed to park the car if all direction indicators are on.

Correct.



Incorrect



3034. It is allowed to overtake two vehicles simultaneously.



Correct

Incorrect



3035. It is allowed to overtake the tram only from the right side.



Correct.

Incorrect.



3036. The traffic sign with a supplementary table allows traffic in two directions for 20-24 hours.



Correct.

Incorrect



3037. In this situation, overtaking is allowed from both sides since the longitudinal line is interrupted.

Correct.



Incorrect.



3038. The traffic sign indicates the narrowing of the road section at right angles from both sides.

Correct



Incorrect



3039. At a distance of less than 5 meters in front of the pedestrian crossing, it is forbidden to stop and park the vehicle.



Correct.

Incorrect.

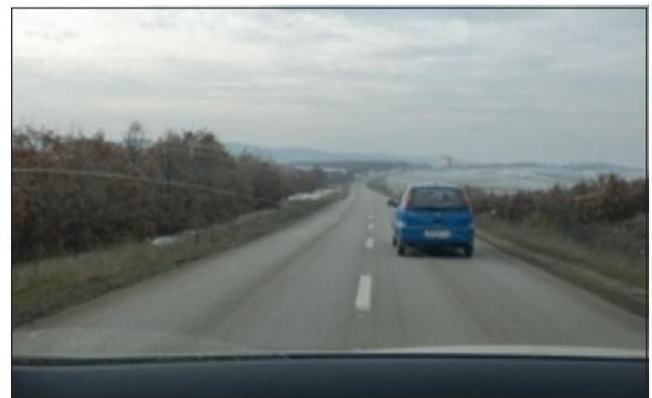


3040. Overtaking is not allowed in this situation due to the interrupted longitudinal line (mirror view, blind spot and signaling)..



Correct.

Incorrect





3041. In this situation, it is allowed to park the vehicle for up to 15 min.

Correct.



I didn't see it.



3042. In this situation, caution should be increased if we are Approaching the neck of the mont (road ridge) I may come across a vehicle moving in my lane.



Correct

Incorrect



3043. In this situation, overtaking of the motor cultivator is allowed.



Correct.

Incorrect.



3044. If the vehicle is parked on a hill, the front wheels of the car turn towards the middle of the road (left).



Correct.

Incorrect



3045. Exceeding is not allowed in this situation.

✓ Correct.

Incorrect



3046. Overtaking is allowed, only from the right side.

Correct

✓ Incorrect



3047. The permitted speed during the towing of a broken-down car is 60 km/h.

Correct.

✓ Incorrect.



3048. The path from the moment of noticing the danger to pressing the pedal is called the reaction path.

✓ Correct.

Incorrect



3049. The railroad crossing is arranged with illuminated signs and I must stop.

Correct.

I didn't see it.



3050. Exceeding is not allowed in this situation.

Correct

Incorrect



3051. It is allowed to stop or park the vehicle in the field for road traffic orientation.

Correct.

Incorrect.



3052. While driving, I will make sure that I can come across the prohibited column on the road.

Correct.

Incorrect





3053. If the traffic is not obstructed, the car driver is allowed to increase the speed until you are overtaking him.

Correct.



I didn't see it.



3054. In this situation, I will increase the lateral safety distance, since the pedestrian can cross the road.



Correct

Incorrect



3055. The load in the car can exceed the front part up to 1.5m.

Correct.



Incorrect.

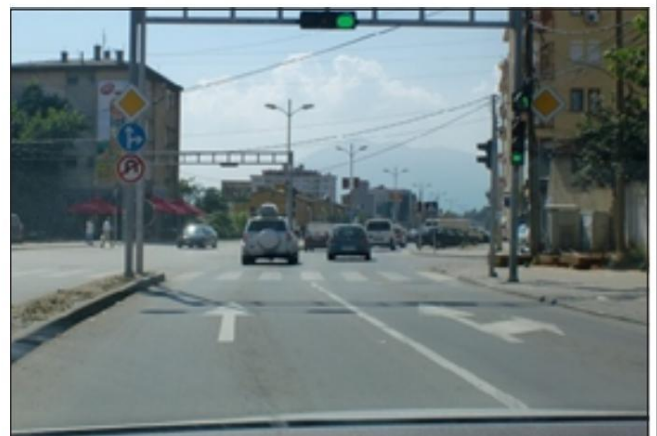


3056. In this situation, semicircular return is allowed.

Correct.



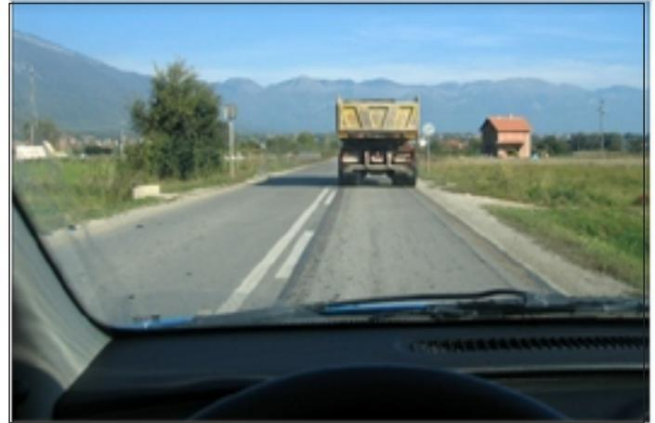
Incorrect.



3057. Exceeding is allowed in this situation.

✓ Correct.

Incorrect



3058. The safety belt is used while driving only inside the residence.

Correct

✓ Incorrect



3059. To exit the highway, you must use the stop bar and signal with direction indicators.

✓ Correct.

Incorrect.



3060. Exceeding is allowed in this situation.

Correct.

✓ Incorrect



3061. From the place where the signs are placed, movement at a speed greater than 50 km/h is not allowed.

Correct.

✓ Incorrect



3062. Driving on a long, straight road encourages the driver to speed.

✓ Correct

Incorrect



3063. In this part of the road, I am not allowed to move at a speed of less than 20 km/h.

Correct.

✓ Incorrect.



3064. In this situation, overtaking the carriage is not allowed.

Correct.

✓ Incorrect





3065. The vehicle in front has its high beams on you must also act in them, turning on the high beams so that the road can be seen better..

Correct.

✓ Incorrect



3066. Driving on a long, straight road is never dangerous, since the visibility of the road is good.

✓ Correct

Incorrect



3067. The driver is obliged to stop the car and drive them away from the road, the things that he encounters on the road.

Correct.

✓ Incorrect.



3067. In this situation, you must stop the car, then continue moving at the same speed, because road works..

Correct.

✓ Incorrect



3069. During driving in this situation, in case of braking, the reaction path increases.

Correct.



I didn't see it.



3070. The driver who is at or encounters the scene of the accident where there are injured persons, must not take the injured to the health institution.

Correct



Incorrect



3071. The speed limit up to 40 km/h starts from the place where the sign is placed and is valid until the first intersection.



Correct.

Incorrect.



3072. It is allowed to overtake the tram from the right and left side in this situation.



Correct.

Incorrect.





3073. The emergency vehicle is in intervention, I will pull over and, as necessary, reduce the speed of movement.

✓ Correct.

Incorrect:



3074. While driving in strong sunlight in this situation, dangerous traffic situations may not be noticed.

✓ Correct

Incorrect



3075. In this part of the road, you should move with extra care.

Correct.

✓ Incorrect.



3076. You are allowed to continue driving if I cannot stop safely before the intersection.

✓ Correct.

Incorrect:





3077. Exceeding is allowed in this situation.

Correct.

✓ Incorrect



3078. The child up to 3 years old can be carried in the car only to the nursery school.

Correct

✓ Incorrect



3079. Strong side winds are especially dangerous for two-wheeled vehicles (bicycles, mopeds, motorcycles without side trailers).

✓ Correct.

Incorrect.



3080. On the national road, it is not allowed to move backwards in any case.

✓ Correct.

Incorrect



3081. It is allowed to overtake the motorcycle in this situation

Correct.

✓ Incorrect



3082. The driver of the car who enters the street from the yard of the house must not let go of the pedestrians who are moving on the sidewalk.

Correct

✓ Incorrect



3083. Before driving, the driver is obliged to visually look around the car.

✓ Correct.

Incorrect.



3084. When turning right as in this situation, I will not give priority to the pedestrian crossing, as there is no marked pedestrian crossing.

Correct.

✓ Incorrect





3085. Children in traffic are not aware of the danger and may not be noticed by vehicle drivers.

✓ Correct.

Incorrect



3086. In this situation, we consider the direction deviation and are obliged to move only to the right.

✓ Correct

Incorrect



3087. When driving on icy roads, the braking distance is reduced.

Correct.

✓ Incorrect.



3088. On this road, traffic is carried out in one direction only, some pedestrians can get out of the parked cars onto the road.

✓ Correct.

Incorrect





3089. From the place where the traffic sign is placed, overtaking is allowed.

✓ Correct.

Incorrect



3090. In this situation, the place of danger starts from the place where the sign is placed.

Correct

✓ Incorrect



3091. It is not allowed to move back into the tunnel.

Correct.

✓ Incorrect.



3092. Prohibition of overtaking, starts from 150-250 m from the place where the sign is placed.

Correct.

✓ Incorrect



3093. Semi-circular return is allowed in this situation.

✓ Correct.

Incorrect



3094. The traffic sign Kruqi I Andreut indicates the passage of the road across the railway with two or more pairs of tracks.

Correct

✓ Incorrect



3095. In this situation, I will be careful in the safety distance to the Auto School car.

✓ Correct.

Incorrect.



3096. The right vehicle has signaled for a left turn, you must give priority to passing as it is coming from the right side.

Correct.

✓ Incorrect



3097. When driving at night, we use high beams to see the road better.

Correct.

✓ Incorrect.



3098. When getting out of the car, the driver must look at the traffic from behind, through the mirrors and the blind spot.

✓ Correct

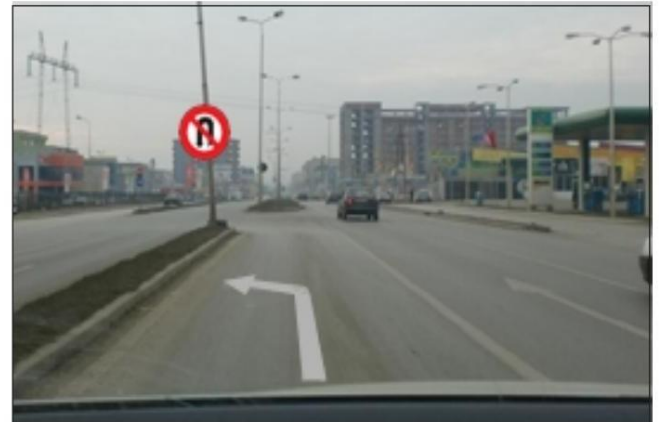
Incorrect



3099. In this situation, semicircular return is allowed.

Correct.

✓ Incorrect.



3100. For the second exit (2) you can continue moving only along the blue trajectory.

Correct.

✓ Incorrect





3101. In this situation, the place where road works are carried out starts from the traffic sign.

Correct.

✓ Incorrect



3102. The load in the car which exceeds the rear part more than 1 m, is marked with red cloth.

✓ Correct

Incorrect



3103. The maximum speed on the national road outside the settlement with two lanes for one direction of movement with physical separation is 80 km/h.

Correct.

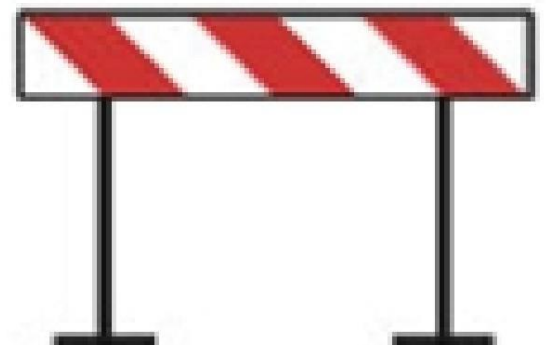
✓ Incorrect.



3104. The road device shows the railway crossing with protective..

Correct.

✓ Incorrect

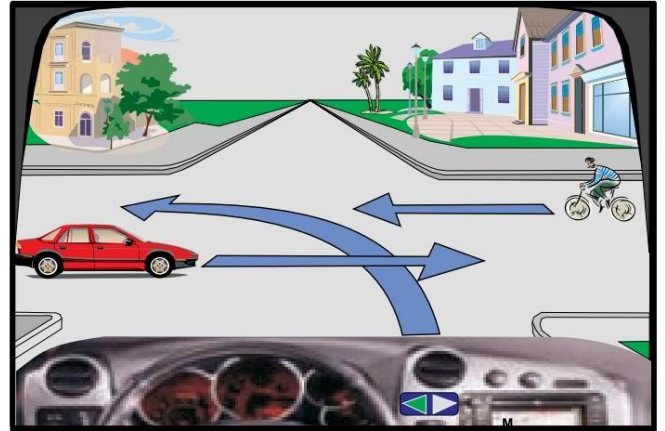


4001. At this intersection, the red car moves first.

Correct.



Incorrect.

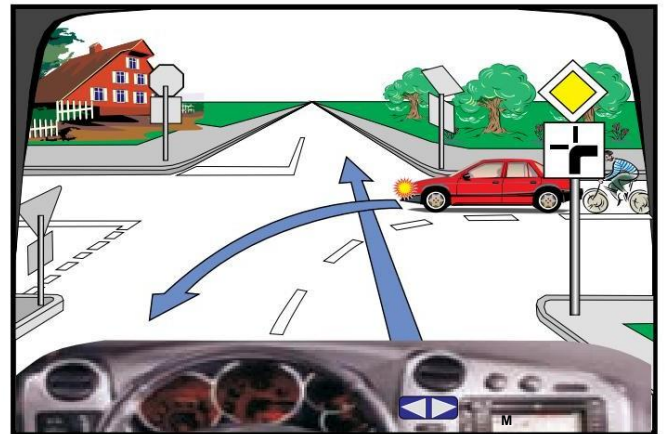


4002. At this intersection, the red car and the cyclist have the right of way.

Correct



Incorrect.



4003. In this intersection I moved behind the pedestrian.

Correct.



Incorrect.

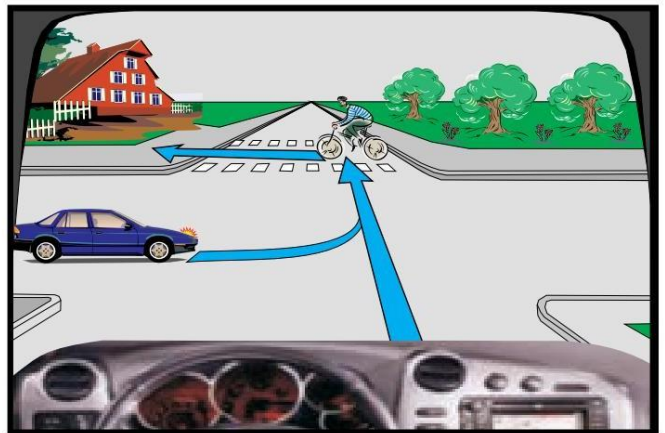


4004. In this intersection, the blue car moves in front of the cyclist.

Correct.



Incorrect .

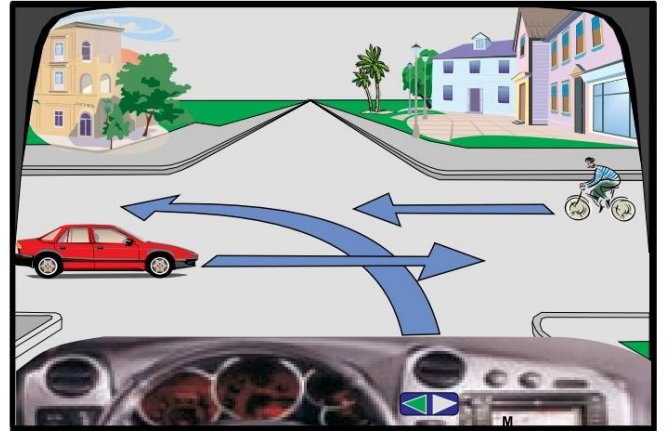


4005. In this intersection the sequence of crossing should be: cyclist, me, red car.



Correct.

I didn't see it.

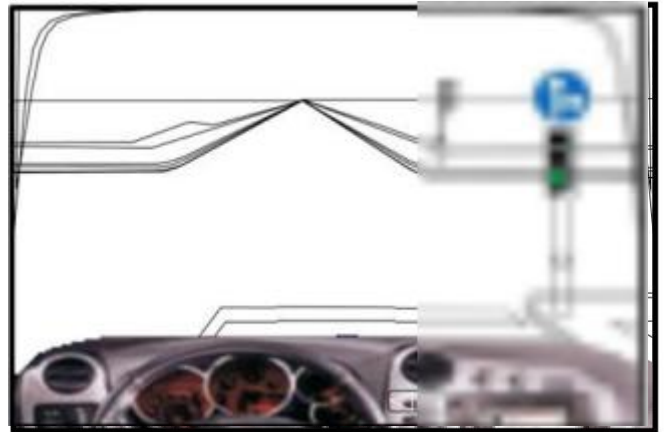


4006. In this intersection I am allowed to move without stopping straight or left.

Correct



Incorrect.

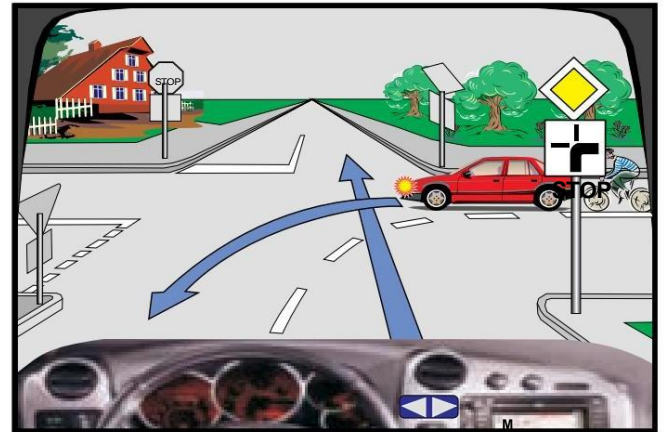


4007. In this intersection I will move last.



Correct.

Incorrect.



4008. In this intersection, I am allowed to move right or left.

Correct.



Incorrect.



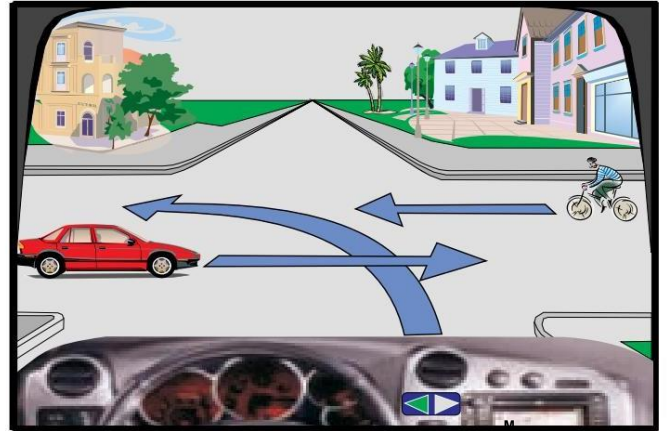


4009. In this intersection I move second.



Correct.

Incorrect



4010. In this intersection (situation) I will move first.

Correct.



Incorrect.

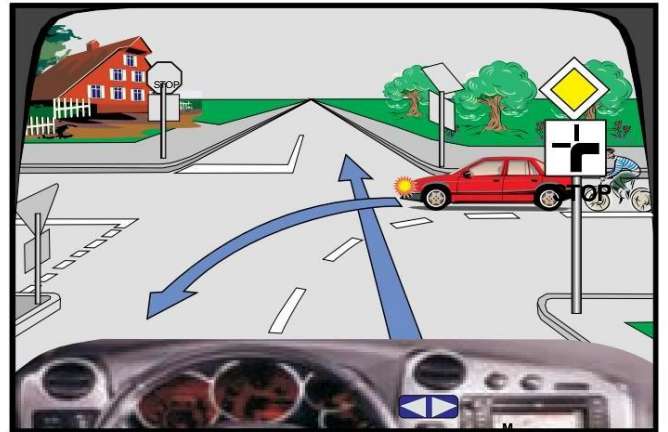


4011. In this intersection, the red car moves first



Correct.

Incorrect.

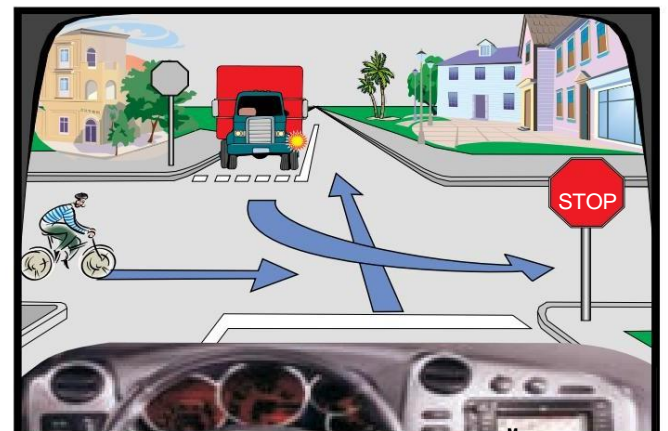


4012. In this intersection, the sequence of crossing should be: me, the truck, the cyclist.

Correct.



Incorrect .



4013. In this intersection, I will continue the movement first.

Correct.

Incorrect



4014. In this intersection, the green car will move first.

Correct

Incorrect



4015. In this intersection I am allowed to turn right without stopping.

Correct.

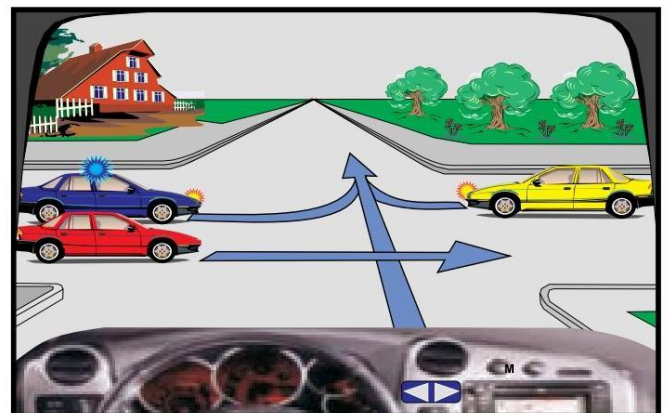
Incorrect.



4016. In this intersection, the red car moves first.

Correct.

Incorrect



4017. In this intersection I will continue the movement I first.

✓ Correct.

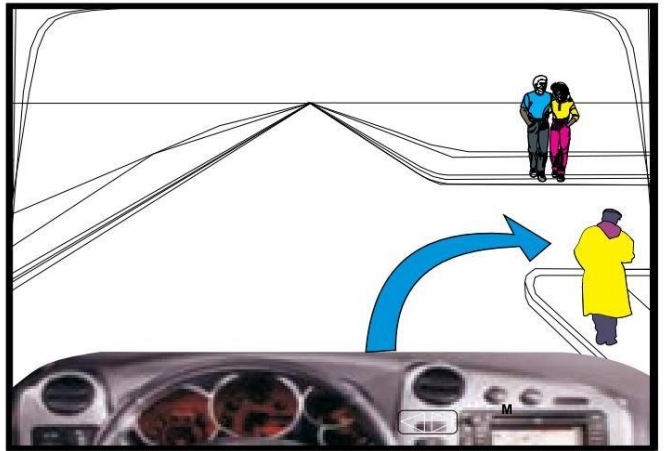
Incorrect.



4018. In this intersection I have the right of way over pedestrians.

Correct

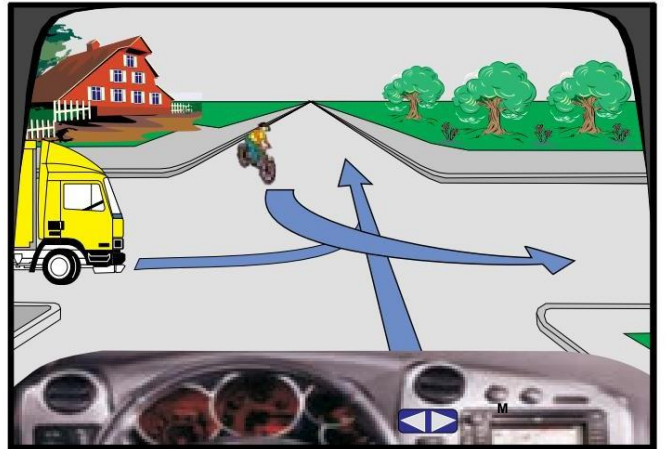
✓ Incorrect .



4019. In this intersection the truck will move first.

Correct.

✓ Incorrect.



4020. In this intersection, the red car moves first.

Correct.

✓ Incorrect .





4021. At this intersection, the red car moves last.

✓ Correct.

Incorrect



4022. In this intersection, the sequence of crossing should be: the pedestrian, me, the blue car.

✓ Correct

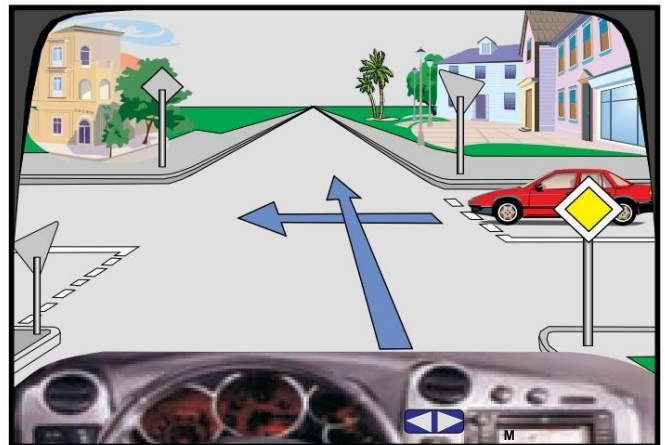
Incorrect



4023. At this intersection, the red car moves last.

✓ Correct.

Incorrect.



4024. In this intersection the sequence of crossing should be: the cyclist, me , the truck.

Correct.

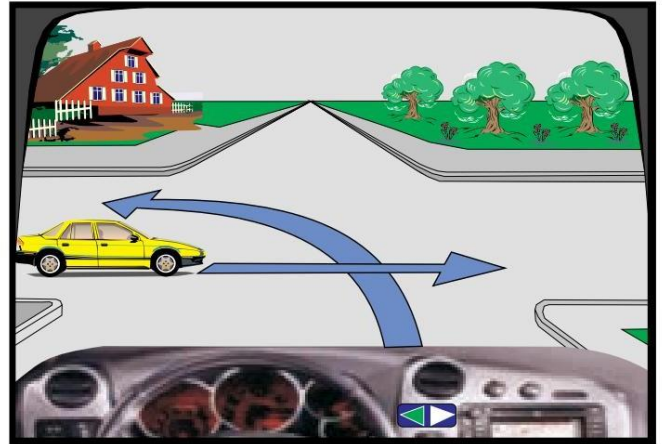
✓ Incorrect



4025. At this intersection, I move first.

✓ Correct.

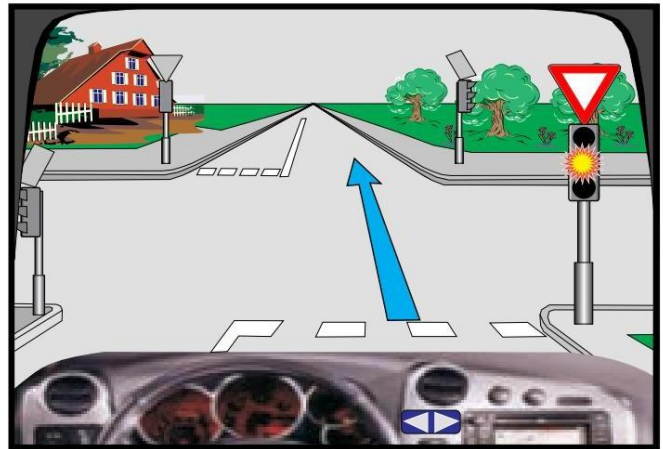
Incorrect



4026. The flashing . In a traffic light, when the intermittent yellow light is on, I will wait until the green light comes on in the traffic light.

Correct

✓ Incorrect



4027. In this intersection, the red car moves first.

✓ Correct.

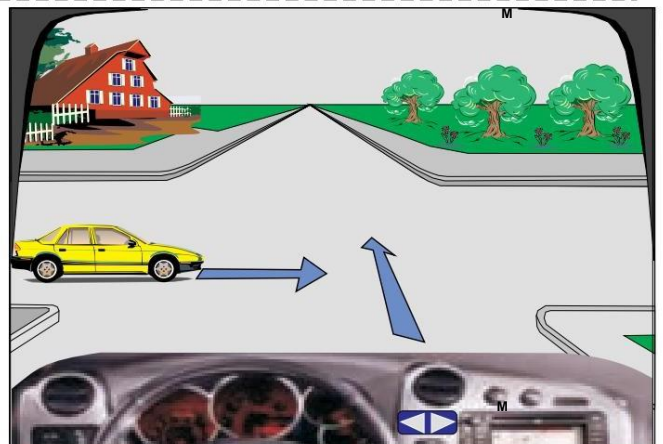
Incorrect.



4028. At this intersection, the yellow car moves first.

Correct.

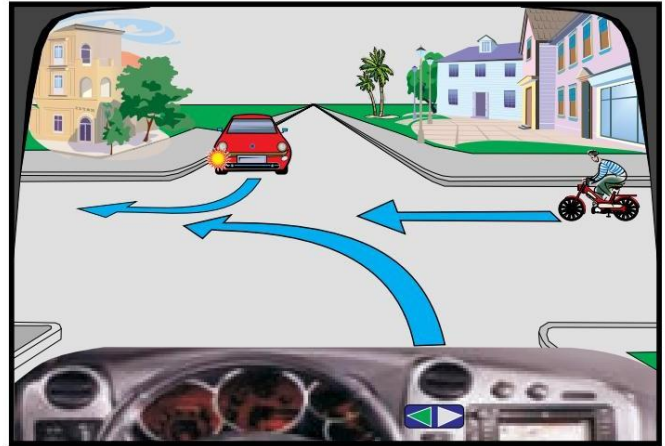
✓ Incorrect.



4029. At this intersection I moved first.

Correct.

✓ Incorrect



4030. In this situation, the blue car will move last.

✓ Correct

Incorrect



4031. In this intersection, I must make a left turn due to the supplementary sign.

Correct.

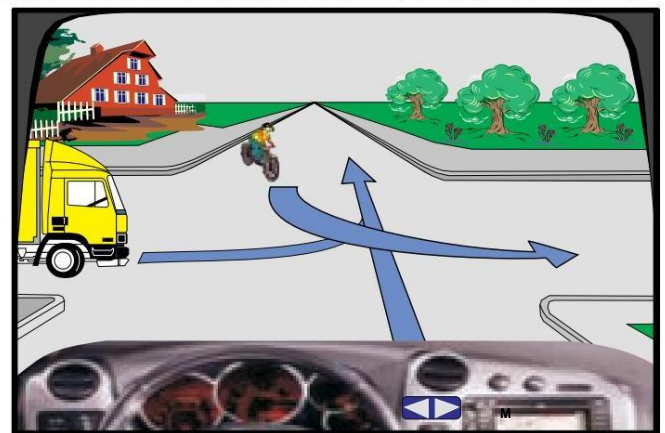
✓ Incorrect.



4032. In this intersection, the sequence of crossing should be: me, the truck, the cyclist.

✓ Correct.

Incorrect.

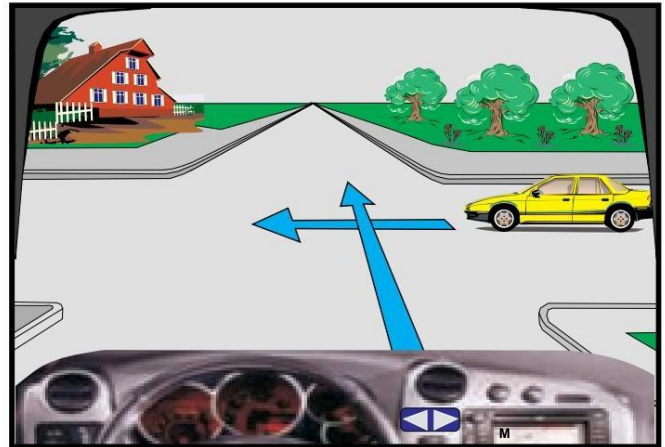




4033. At this intersection I move second.

✓ Correct.

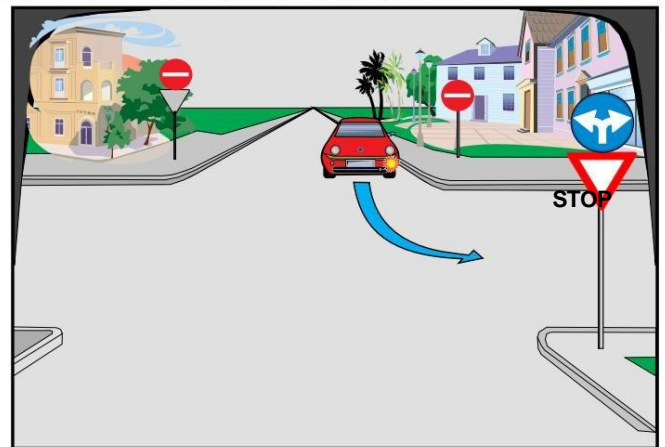
I didn't see it.



4034. In this intersection, the vehicle is lined up straight to make a left turn.

✓ Correct

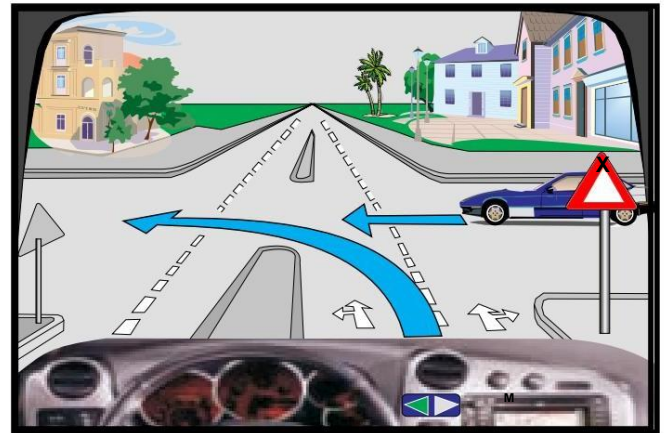
Incorrect



4035. At this intersection I moved first.

Correct.

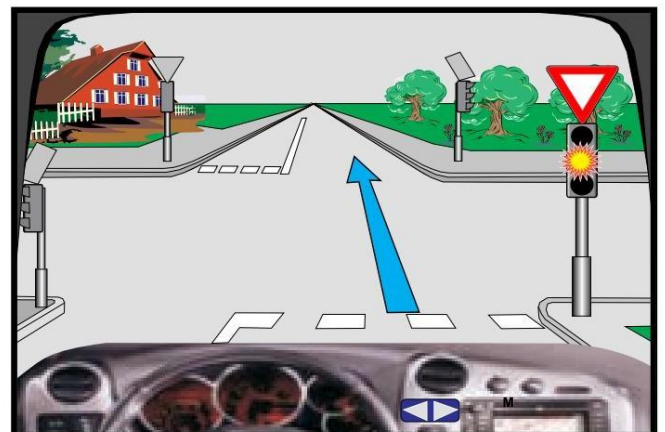
✓ Incorrect.



4036. The flashing yellow light is on at the traffic light (intermittently), in this situation, I must stop before the traffic sign.

Correct.

✓ Incorrect.

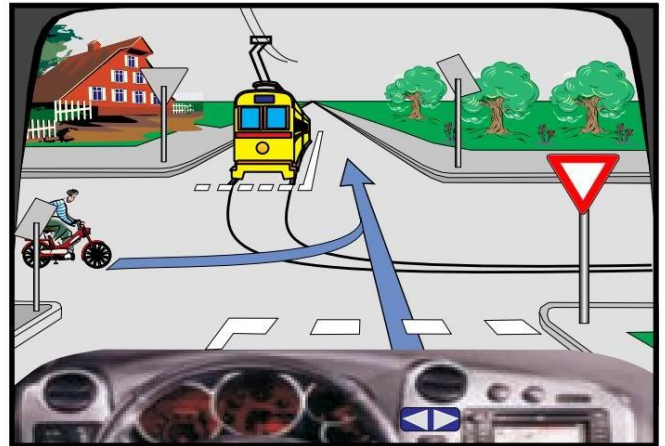


4037. At this intersection, , the sequence of crossing should be: the tram, the cyclist, me.

Correct.



Incorrect

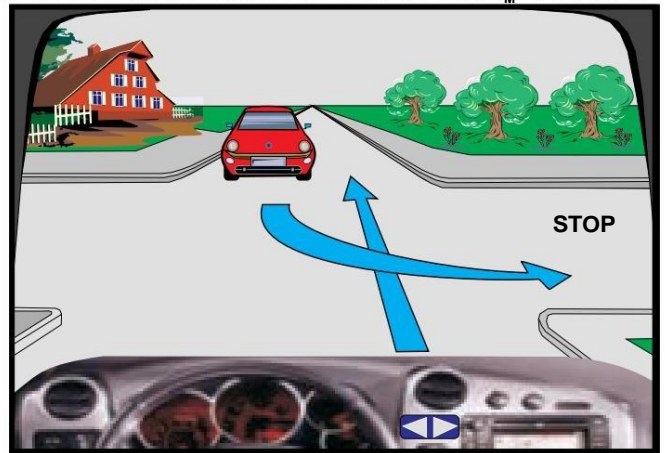


4038. At this intersection I moved first.



Correct

Incorrect

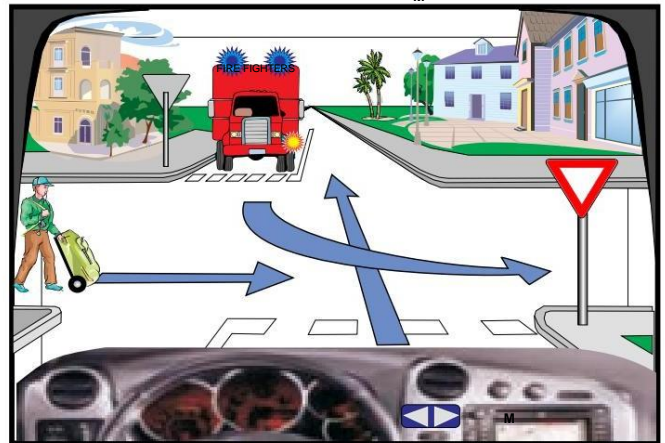


4039. In this intersection, the sequence of crossing should be: truck, pedestrian, me.



Correct.

Incorrect.

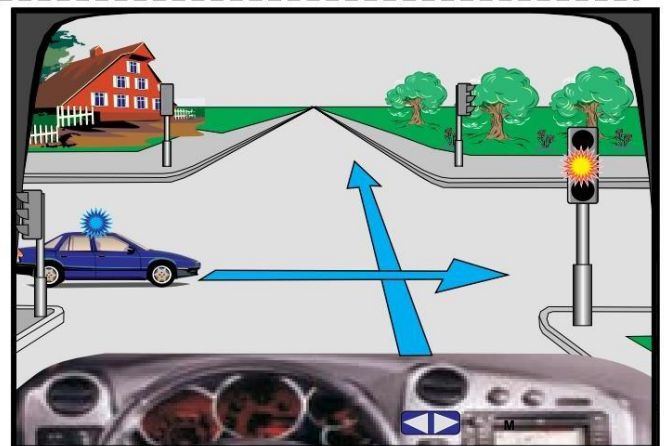


4040. In this intersection I will continue the movement I first.

Correct.



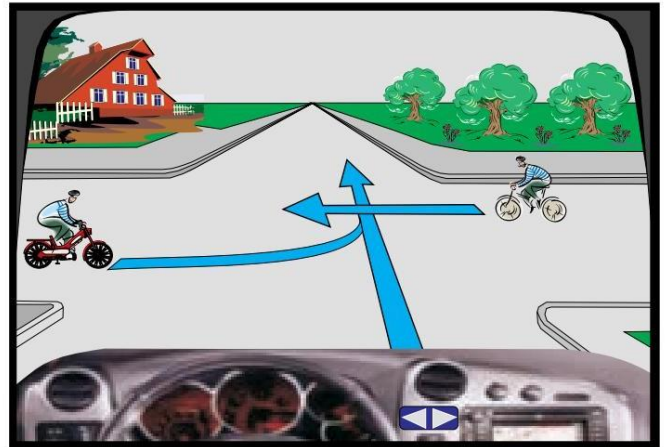
Incorrect



4041. At this intersection, the moped moves first.

Correct.

✓ Incorrect.



4042. At this intersection, I am allowed to move left and right.

✓ Correct

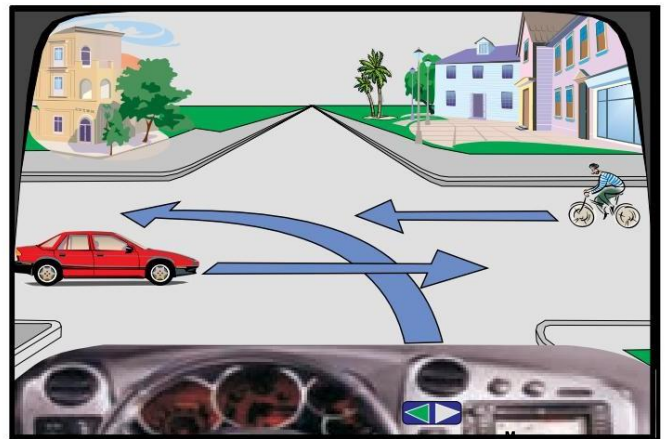
Incorrect



4043. At this intersection the sequence of crossing should be: the red car, the cyclist, me.

Correct.

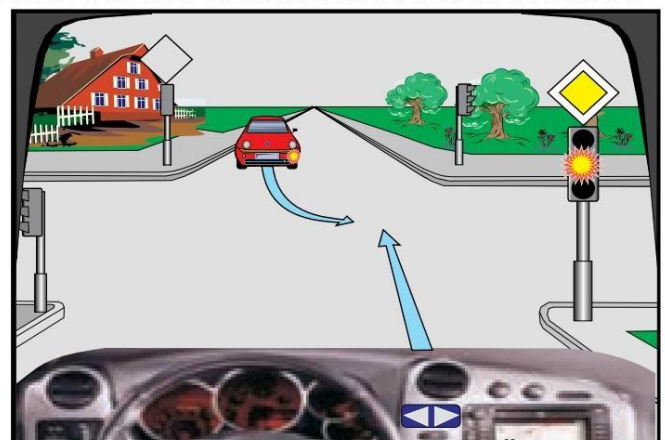
✓ Incorrect.



4044. The flashing yellow light is on at the traffic light (intermittently), in this situation I will continue the movement without stopping.

✓ Correct.

Incorrect





4045. At this intersection, the cyclist moves first.

Correct.

I didn't see it.



4046. In this intersection, I am allowed to move straight, left or right without stopping.

Correct

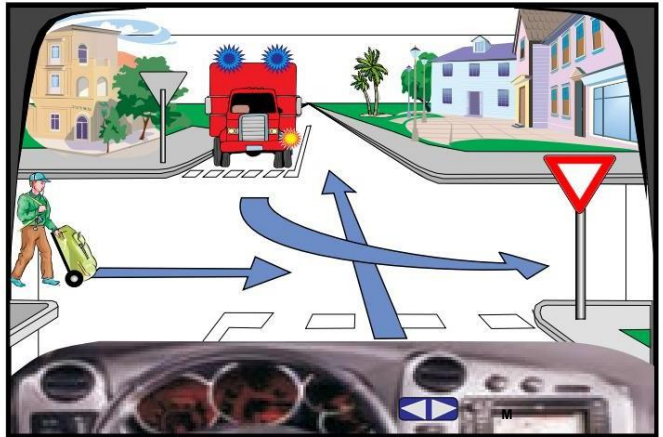
Incorrect



4047. In this intersection, the sequence of crossing should be: pedestrian, me, truck.

Correct.

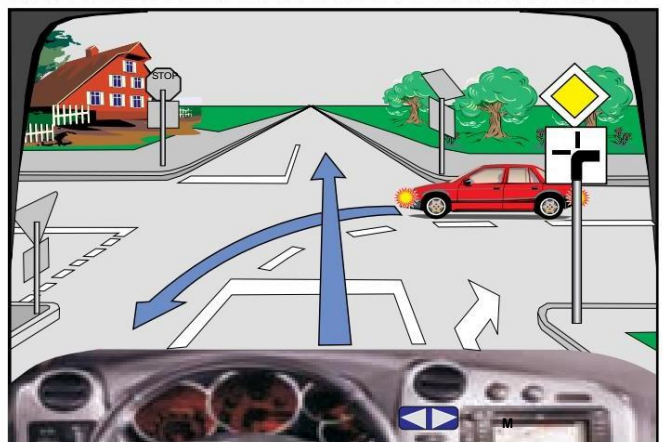
Incorrect.



4048. In this intersection I will move first.

Correct.

Incorrect.



4049. In this intersection, the green car must stop first.

Correct.

✓ Incorrect.



4050. In this intersection I will continue moving in front of the cyclist.

Correct

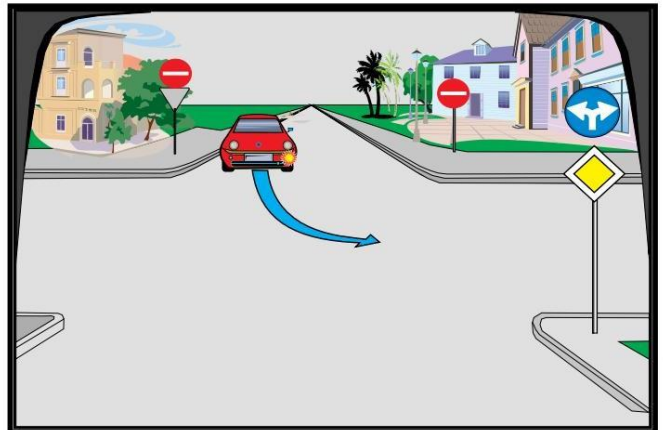
✓ Incorrect



4051. In the car is lined up straight to make a left turn.

Correct.

✓ Incorrect.



4052. At this intersection, the yellow car moves first.

Correct.

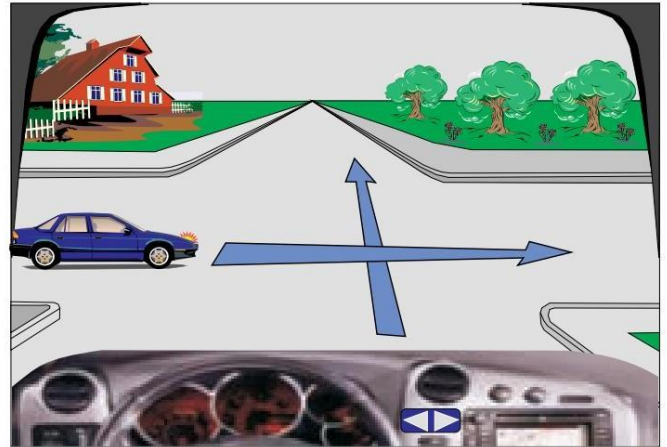
✓ Incorrect.



4053. At this intersection, the blue car moves last.

✓ Correct.

Incorrect.



4054. In a traffic light, when the intermittent yellow light is on. In this situation, I will continue driving with increased caution.

✓ Correct

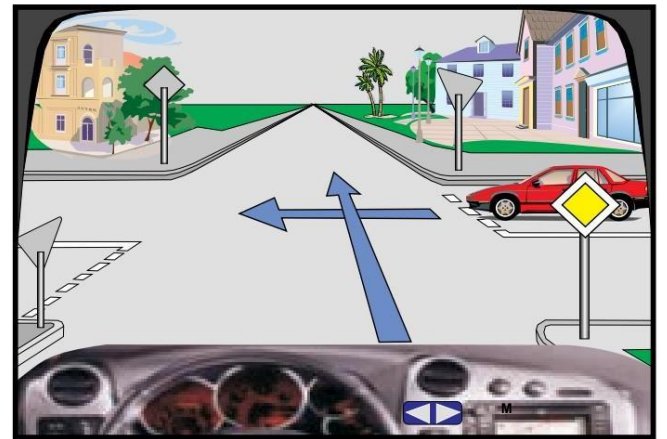
Incorrect



4055. At the intersection, I move in front of the red car.

✓ Correct.

Incorrect.



4056. In this intersection, the sequence of crossing should be: the blue car, me, the pedestrian.

Correct.

✓ Incorrect





4057. At this intersection, it will continue moving without stopping.

Correct.

✓ Incorrect



M

4058. At this intersection, I will continue the movement I first.

Correct

✓ Incorrect

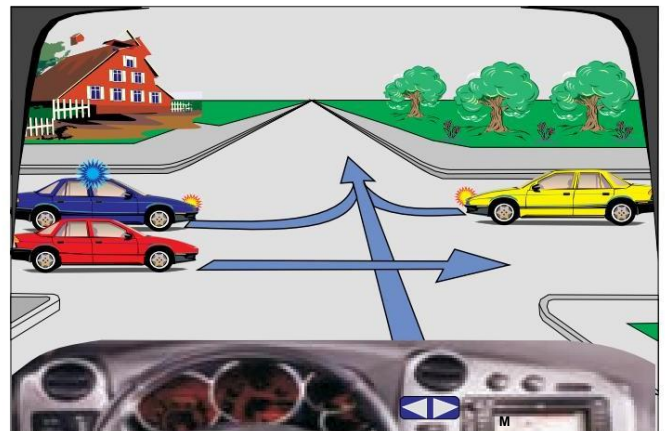


M

4059. At the intersection, the sequence of crossing should be: red car, police, yellow car, me.

Correct.

✓ Incorrect.



M

4060. At the intersection I moved first.

Correct.

✓ Incorrect

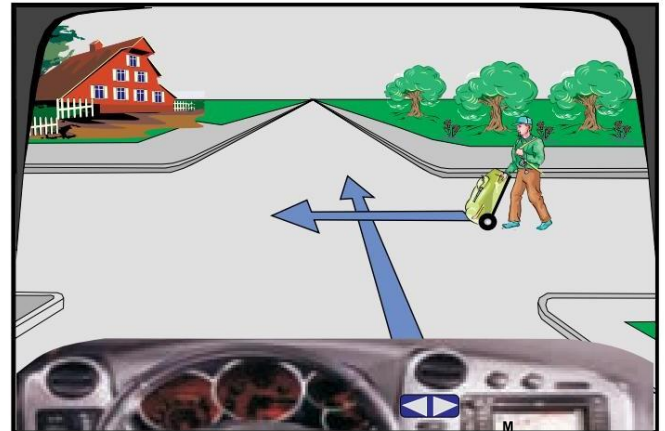


M

4061. In this intersection, I will be cautious about the pedestrians even though they are not moving in a straight line.

✓ Correct.

Incorrect.



4062. At this intersection, I will continue the movement without stopping.

✓ Correct

Incorrect



4063. At this intersection, the cyclist moves second.

✓ Correct.

Incorrect.



4064. At this intersection, I must stop before the STOP sign, then I will continue the movement with increased caution.

Correct.

✓ Incorrect



4065. In this situation, I will give priority to passing the yellow vehicle, since they keep the direction of movement.

Correct.



Incorrect



4066. In this situation I will move first.



Correct

Incorrect

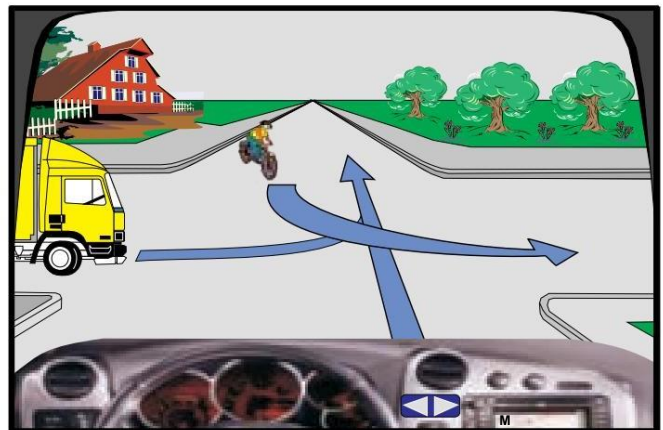


4067. In this situation I will move first.



Correct.

Incorrect.

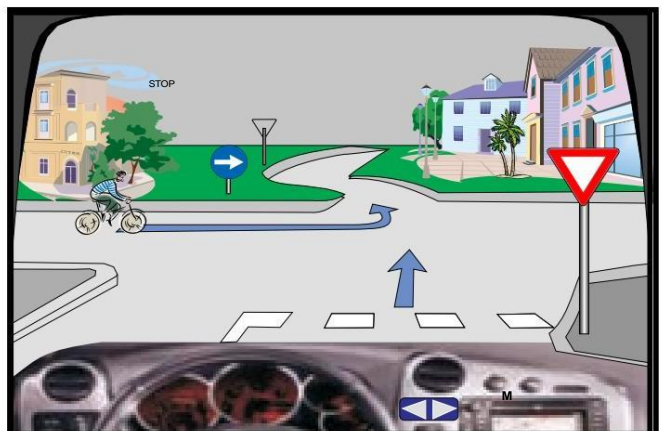


4068. In this situation I will move first.

Correct.



Incorrect





4069. In this situation I will move first.

Correct.



Incorrect.

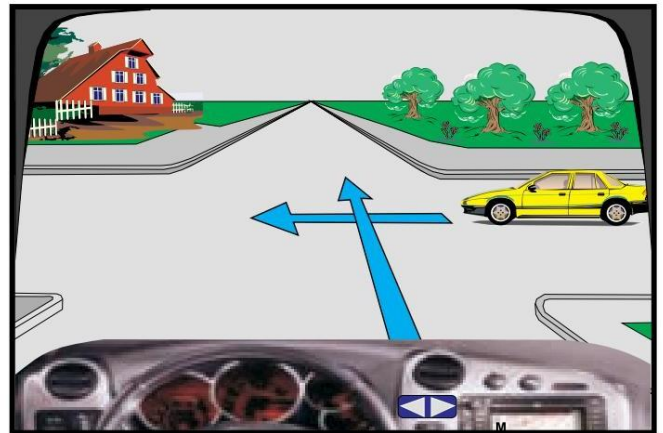


4070. In this intersection, the yellow car moves first.



Correct

Incorrect

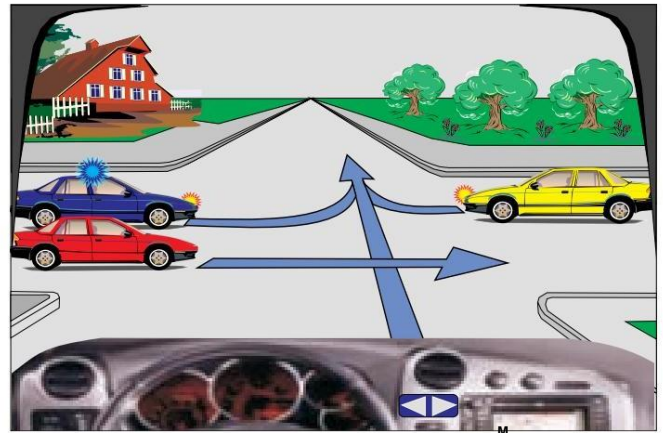


4071. At the intersection, the sequence of crossing should be:: police car, yellow car, me, red car.



Correct.

Incorrect.



4072. In this situation I will move last.



Correct.

Incorrect.



5001. Alcohol while driving triggers the desire for high speed.



Correct.

Incorrect.

5002. Alcohol while driving has a negative effect.



Correct .

Incorrect .

5003. Medicines (herbs) which are not allowed to be consumed before and during driving have a positive effect.

Correct.



Incorrect.

5004. The driver under the influence of alcohol assesses traffic situations more accurately.

Correct.



Incorrect .

5005. Fatigue negatively affects the driver's psycho-physical condition.

Correct



Incorrect .

5006. Fatigue negatively affects the driver's psycho-physical condition.



Correct.

Incorrect

5007. Regular rest negatively affects the psycho-physical condition of the driver.

Correct.



Incorrect.


5008. Noise and vibrations have a positive effect on the psycho-physical condition of the driver.

Correct .

 Incorrect .

---

5009. Narcotics (drugs) negatively affect the driver's psychophysical condition.


 Correct

Incorrect .

---

5010. Regular food negatively affects the driver's psychophysical capacities.

Correct.

 Incorrect.

---

5011. The driver's conversation with a fellow passenger negatively affects the driver's psychophysical capacities.


 Correct.

Incorrect

---

5101. The environment is protected while driving (Eco-driving) and fuel is saved if we drive the car at maximum speed.

Correct .

 Incorrect .

---


5102. The environment is protected while driving (Eco-driving) and fuel is saved if we press the gas pedal on the stopped vehicle.

Correct .

 Incorrect .

---

5103. The environment is protected while driving and fuel is saved (Eco-driving if the driving is free of rush and sudden braking..

 Correct.

Incorrect.



5104. **The environment is protected while driving (Eco-driving) and fuel is saved if the engine is turned off during long waits..**


 Correct .

Incorrect .

---

5105. **The environment is protected while driving (Eco-driving) and fuel is saved if we use the car for short distances.**

Correct .

 Incorrect .

---

5106. **The way of driving that protects the environment while driving (Eco-driving) and saves fuel is to start smoothly and accelerate slowly.**


 Correct.

Incorrect.

---

5107. **The environment is protected while driving and fuel is saved (Eco-driving) if we drive with the maximum torque.**

Correct.

 Incorrect .

---

5108. **Cost-efficiency driving is characterized by minimal fuel costs.**

 Correct .

Incorrect .

---

5109. **Cost-efficiency driving is characterized by maximum fuel consumption.**

Correct .

 Incorrect .

---

5110. **Eco-driving is characterized by driving with a medium number of engine torques.**

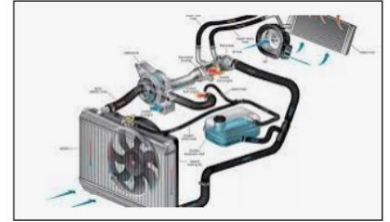
 Correct.

Incorrect.

5201. Cooling devices (liquid/water) enable the engine to work.

✓ Correct .

Incorrect .



5202. The safety triangle is not a mandatory spare part of the car.

✓ Correct .

Incorrect .



5203. Side indicators are used during vehicle operations (overtaking, turning left or right, etc)..

✓ Correct.

Incorrect.



5204. The control panel of the vehicle serves to check the number of passengers in the vehicle.

Correct.

✓ Incorrect .



5205. Low air pressure in pneumatics (tires) reduces the stability of the vehicle and damages the pneumatics.

✓ Correct .

Incorrect .



5206. The steering wheel serves for the operation of the engine.

Correct .

✓ Incorrect .



5207. Low air pressure in pneumatics (tires) increases fuel consumption.

✓ Correct.

Incorrect.



5208. The photo shows the operation of signaling devices.

✓ Correct .

Incorrect .



5209. The vehicle's ABS system enables the wheels to not lock up during braking.

✓ Correct .

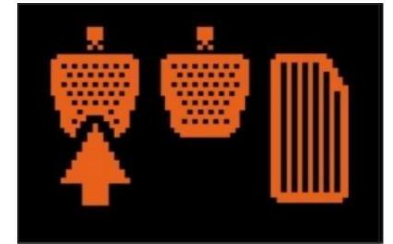
Incorrect .



5210. The friction pedal serves to stop the vehicle in emergency cases.

Correct.

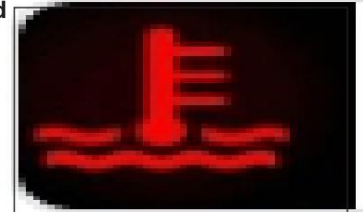
✓ Incorrect.



5211. The control lamp in the photo signals (indicates) that the engine temperature has exceeded the allowed limit - the cooling system is defective.

✓ Correct.

Incorrect



5212. The control lamp in the photo signals (indicates) that the ABS system is functional.

Correct .

✓ Incorrect



5213. The control warning in the photo indicates that the engine temperature has exceeded the allowed limit - the cooling system is defective.

Correct .

✓ Incorrect .



5214. The control warning in the photo indicates the insufficient amount of oil in the engine or a defect in the lubrication system.

✓ Correct.

Incorrect.

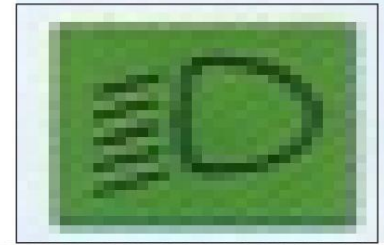




5215. The control sign in the photo indicates that the vehicle's fog lights are on.

Correct .

✓ Incorrect .



5216. The control lamp in the photo signals (indicates) that the high beams are on in the vehicle.

Correct .

✓ Incorrect .



5217. The control sign in the photo indicates that all vehicle's side indicators are on.

✓ Correct.

Incorrect.



5218. The control lamp signals (indicates) the alternator is working properly.

Correct.

✓ Incorrect



5219. The control lamp signals (indicates) that the cruise control is not activated.

Correct .

✓ Incorrect .



5220. The control lamp signals (indicates) that the high beams are out of order.

Correct .

✓ Incorrect



5221. The control lamp signals (indicates) a problem with the electric current.

✓ Correct.

Incorrect.



5222. The control lamp signals (indicates) the parking brake is functional.

Correct .

✓ Incorrect .



5223. The control lamp signals (indicates) the safety belt is functional.

Correct .

✓ Incorrect .



5224. The control lamp signals (indicates) ESP - Electronic stability program.

✓ Correct.

Incorrect.



5225. The control lamp signals (indicates) the speed of movement.

Correct.

✓ Incorrect .



5226. The control lamp signals (indicates) the engine temperature.

Correct .

✓ Incorrect .



5227. Control lamp signals (indicates) lights out of order.

Correct .

✓ Incorrect .



5228. The control lamp signals (indicates) problems with the airbag.

✓ Correct.

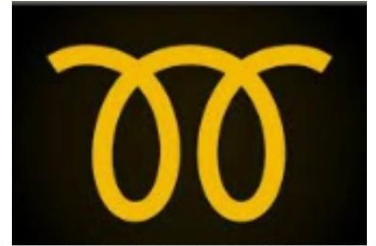
Incorrect.



5229. The control lamp signals (indicates) that the heaters are of order (diesel).

✓ Correct .

Incorrect .



5230. The control lamp signals (indicates) the steering servo is in order.

Correct .

✓ Incorrect .



5231. The photo shows the ECOLOGICAL Mode.

✓ Correct.

Incorrect.



5232. The small safety distance is shown in the photo.

✓ Correct.

Incorrect .



5233. The photo shows the driving time meter.

Correct .

✓ Incorrect .



5234. The photo shows a flower garden.

Correct .

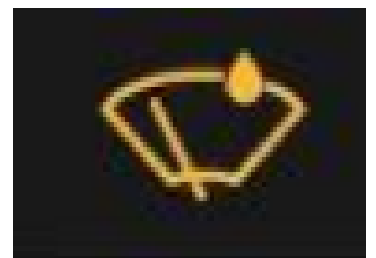
✓ Incorrect .



5235. In fig. the lack of water for washing the windows is presented..

✓ Correct.

Incorrect





**5301. What characterizes the driver's safety in road traffic?**

- ✓ Culture in road traffic.
  - Smoking while driving.
  - Driving at the maximum speed that the vehicle develops.
- 

**5302. What are the principles of defensive driving?**

- To the owner of the vehicle
  - Aggressiveness of traffic participants
  - ✓ Be tolerant of other people's mistakes
- 

**5303. What is meant by culture in traffic?**

- ✓ Mutual respect in traffic.
  - Drinking alcohol while driving.
  - Aggressiveness of traffic participants.
- 

**5304. What are the principles of defensive (final) driving?**

- ✓ Prediction of the development of traffic situations.
  - Delayed reaction.
  - Using a mobile phone while driving.
- 

**5305. What are the principles of defensive driving?**

- delayed response
  - ✓ Keeping a safe distance while driving.
  - Every time while driving the use of high beams at night.
- 

**5306. What characterizes the driver's safety in road traffic?**

- Rushing into traffic.
  - Driving at the maximum speed that the vehicle develops.
  - ✓ Culture in road traffic.
- 

**5307. To which traffic participants the principle of reliability does not apply?**

- ✓ Children, elderly people, disabled people.
- Bus drivers.
- Professional drivers.

**5308. What is considered wrong behavior in road traffic?**

✓ Any wrong behavior which is contrary to traffic and safety rules

Only behaviors that cause traffic accidents.

Only if the driver applies defensive driving.

---

**5309. Why the principle of trust does not apply to children?**

✓ Their actions are unpredictable.

Because of their aggressiveness.

They know the traffic rules well.

---

**5310. What new and inexperienced drivers should keep in mind?**

✓ How to behave in traffic.  
Drive only at night

.It is not allowed to have co-passengers while driving.

---

**5311. What are the causes that young and inexperienced drivers cause road accidents?**

The vehicle is not owned by the driver.

✓ Driving inexperience.

Application of defensive driving.

---

**5312. What is important for young and inexperienced drivers to know?**

✓ How to react in dangerous situations.

Reading msm while driving.

You know the ages of oncoming drivers.

---

**5313. Why do young and inexperienced drivers endanger road traffic safety.**

ECO-driving application.

✓ Ignorance of the causes that cause road accidents.

Compliance with traffic rules.

---

**5214. Why do young and inexperienced drivers endanger road traffic safety?**

They drive the vehicle with automatic transmission.

✓ They want to be dominant over their peers.

They do not have a driver's license for all categories.

**5215. Who are the most endangered participants in road traffic?**

- ✓ Children, blind people, disabled people.
  - Passengers on buses.
  - The tram driver.
- 

**5216. How children react on the street?**

- ✓ In most cases, they are not aware of the danger in traffic.
  - Depending on the gender.
  - Every time in accordance with traffic rules.
- 

**5217. These are the obligations and responsibilities of traffic participants?**

- You watch the ads on the way.
  - You know the manufacturer of traffic signs.
  - ✓ Do not throw items or garbage on the street.
- 

**5218. What should the driver's attention be diverted to while driving?**

- In use on the phone.
  - ✓ Pedestrians.
  - Using the radio..
- 

**5219. What should the driver pay attention to while driving.**

- ✓ In traffic signs and safety distance..
  - Be careful while writing messages on the mobile phone.
  - In the vehicle type while overtaking.
- 

**5220. What characterizes dangerous behavior in road traffic?**

- Concentration while driving.
  - ✓ Entering dangerous situations.
  - Behavior in accordance with traffic rules.
- 

**5221. What are the principles of defensive driving?**

- The use of the protective helmet of the car driver.
- ✓ Avoiding accidents due to violations of traffic rules by other participants.
- Driving only with an automatic transmission vehicle